

## ATS Ceramic Fuse Rated 36V

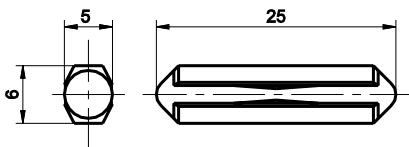
RoHS



36 VDC Torpedo-style fuse links with current rating 5A to 25A.

Sicherungen in Torpedo-Form. Nennspannung 36 VDC, Nennstrom 5A bis 25A.

### Dimensions in mm / Maße in mm



### Specifications

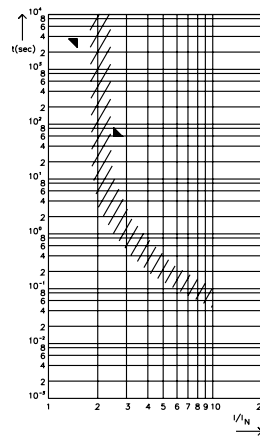
DIN 72581-1

**Insulating body:** 5A: Out of thermoplastic  
8A - 25A: Out of ceramic

### Packaging:

Series Serien	Pack Size
151.51xx.xx6	100


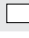


### Pre-arcing time - limits / Schmelzeit-Grenzwerte



FI = 1.00 (max. operating current:  $1.0 \times I_{rat}$  at 23°C)

### Time-Current Characteristics / Schmelzeit-Grenzwerte

% of Rating % des Nennstromes	Opening Time Min / Max (s) Schmelzcharakteristik Min / Max (s)
150	1 h / -
250	- / 60 s

Part Number Artikel-Nr.	Current Rating Nennstrom	Housing Color Kennfarbe	Typ. Voltage Drop Typ. Spannungsfall	
			Standard DIN max.	Littelfuse max.
151.5155.450_	5 A		100 mV	50mV
151.5162.480_	8 A		100 mV	50mV
151.5182.516_	16 A		100 mV	50mV
151.5182.525_	25 A		100 mV	50mV

Corresponding holder see Section "Fuse Holders."