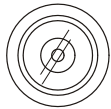


MXN12C

Color Cylindrical Observation Camera



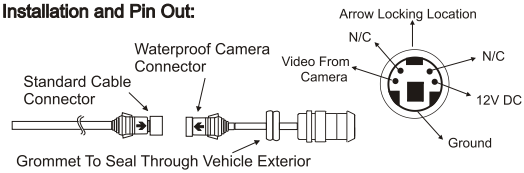
Features:

- High-Resolution, 1/3" Color CCD
- Electronic Iris
- Inverted (Mirrored) Image Orientation
- Waterproof Design
- Compact Aluminum Housing
- Easy Mounting

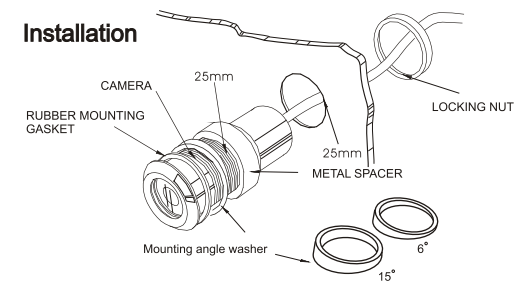
Contents:

Camera / Locking nut / Metal Spacer / Rubber Mounting Gasket
15 degree washer : 1set / 6 degree washer : 1set

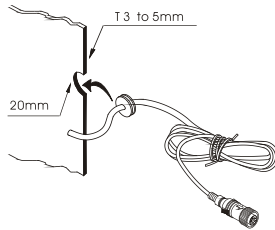
Installation and Pin Out:



Installation



Recommended grommet Hole & Mtg. thickness



Specifications

Signal System : NTSC, PAL
Image Sensor : 1/3" Color Cylindrical Observation Camera
270K pixels (NTSC), 320K pixels (PAL)
Power : 12VDC / 200mA
Viewing Angle : 93°(H), 68°(V), 120°(D)
Outer Dimensions : Ø 30 (W) X 55 (D) mm
Ø 1.2 (W) X 2.2 (D) Inch
Weight : 150g

* Specifications are subject to change without notice.

Printed in Korea