

# Brennstofftank 12- und 24 Liter

## 12 or 24 litre fuel tank



**DE** Bedienungs- und Einbauanweisung

2

**EN** Operating and Installation Instructions

5

# GB Operating and Installation Instructions

## 1 Use of symbols and highlighting:



### DANGER

#### Type and source of the risk

Result: Disregard can result in death.

- ▶ Actions to protect yourself against risks.



### WARNING

#### Type and source of the risk

Result: non-observance can lead to severe or mortal injuries.

- ▶ Actions to protect yourself against risks.



### CAUTION

#### Type and source of the risk

Result: non-observance leads to minor injuries.

- ▶ Actions to protect yourself against risks.



### ATTENTION

#### Type and source of the risk

Result: non-observance leads to property damage.

- ▶ Actions to protect yourself against risks.



Further information can be found in following documents



Note on a special technical feature

- ✓ Requirements for the following necessary action
- ▶ Necessary action

## 2 General



### DANGER

■ The improper installation or repair of Webasto fuel tanks can cause damage or fire. This can lead to serious injury or death. Webasto shall not assume liability for defects or damage that are the result that the installation and operating instructions as well as the instructions contained therein being disregarded.

This liability exclusion particularly applies for:

- installation by untrained personnel
  - improper use
  - repairs not carried out by a Webasto service workshop
  - use of non-genuine parts
  - modification of the fuel tank without permission from Webasto
- In the case of a fault always replace the complete fuel tank.
- Installation in ADR vehicles (hazardous substance transportation) is prohibited.

## 3 Intended use

The 12 or 24 litre fuel tank is used to store and transport diesel fuel and fuel oil in accordance with DIN EN 590, DIN 51628 and DIN 51603 (fuel oil). The fuel tank may only be used as an additional tank for supplying fuel to the parking heater.

The fuel tank is approved for vehicle classes N and O.

## 4 Operation

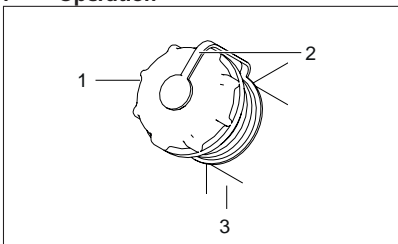


Fig. 1 Filler neck

1. Filler cap
2. Plastic retaining strap
3. Fuel tank



### DANGER

#### Danger of fire and explosion

Do not open or fill in the vicinity of combustion engines or heaters that are in operation.

Do not smoke in the vicinity of the fuel tank.



Ensure operation is changed from summer diesel to winter diesel.

The filler neck of the additional tank has a filler cap with a plastic retaining strap to prevent loss.

- ▶ Switch off motor and heater.
- ▶ Remove the filler cap by turning anticlockwise.
- ▶ Fill.
- ▶ Replace the filler cap by turning clockwise.



After refuelling:

- Hand-tighten filler cap.
- Check plastic retaining strap between the filler cap and fuel tank for damage.

## 5 Maintenance

As part of vehicle maintenance, check the filler cap, plastic retaining strap, fuel line and the fuel tank for damage. Damaged parts MUST be replaced.



Drain off and clean fuel tank:

- if refuelled with dirty fuel.
- if there is water in the fuel tank.

## 6 Installation



### WARNING

#### Electrostatic discharge

- ▶ Install fuel tank with metal spacer sleeves. This ensures permanent equipotential bonding with the vehicle. For an example, see "6.3 Fuel tank mounting with installation kit" on page 6.
- ▶ Connect an earthing cable to the fuel tank if the fuel tank is installed on a non-earthed surface (e.g. on plastic panelling).



### WARNING

#### Fuel leakage

- ▶ Do not install the fuel tank in a potential crash hazard area.



We recommend a fuel filter is installed.

### 6.1 Dimensions

See Fig. A on page 8.

### 6.2 Installation position

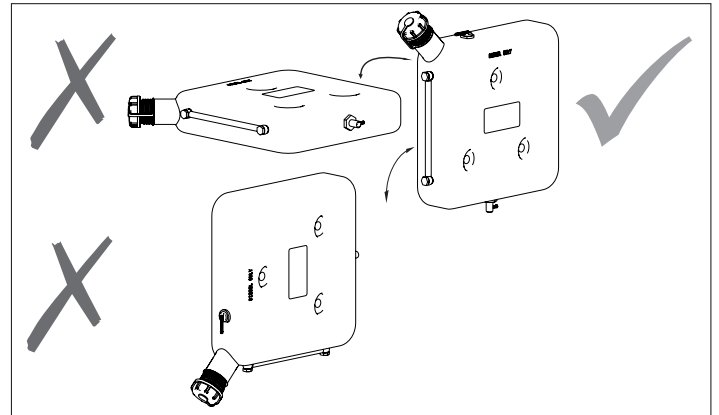


Fig. 2 Permissible installation position



■ The permissible installation position is vertical (see Fig. 2).

- It is not permitted to use the fuel tank to operate the vehicle engine.
- The fuel tank may only be mounted on the outside of the vehicle body (e.g. on rear wall of driver's cab, see Fig. 3).
- If the fuel tank cannot be installed above load-bearing parts such as the frame, a sturdy underride guard must be fitted to the underside of the tank. The tank and the underride guard must not be the lowest point of the vehicle (ground clearance must be maintained).
- It is not permitted to install the fuel tank:
  - in the direct radiated heat range of exhaust systems
  - below the fording level of the vehicle
- Installation in the vehicle interior is not permitted.
- The fuel tank is equipped with a level gauge in the form of a standpipe. Ensure this gauge is visible when selecting the tank installation location.

- ✓ Comply with the generally applicable codes of practice and specification of the vehicle manufacturer when installing the fuel tank.
- ✓ If not otherwise specified: secure tubes, pipes and wiring harnesses with cable ties to the pipes and wiring harnesses of the vehicle.
- ✓ All dimensions specified in mm.
- ▶ Fit protectors on sharp edges.
- ▶ Spray bare parts of the vehicle body, such as holes, with anticorrosion wax.
- ▶ Protect body sections and any other components in the vicinity of the fuel tank to prevent them being soiled by fuel.
- ▶ Every reasonable precaution should be taken in positioning the fuel tank to minimize the risk of injury and damage to personal property.

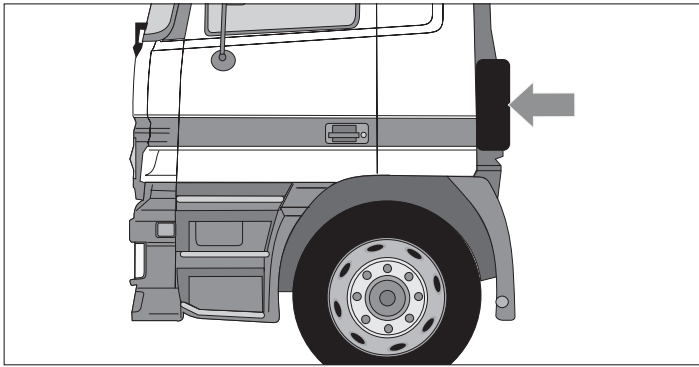


Fig. 3 Installation example

### 6.3 Fuel tank mounting with installation kit

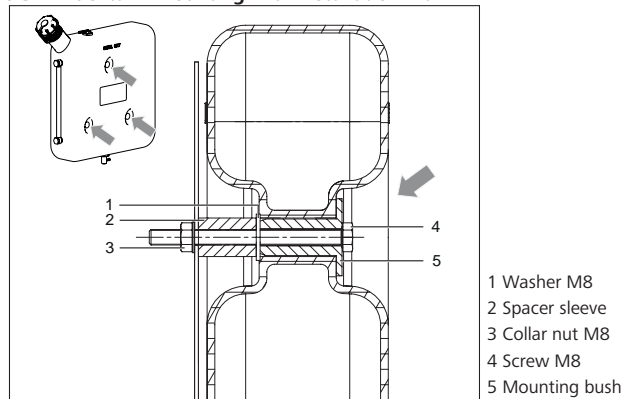


Fig. 4 Fuel tank mounting with installation kit

Use the Webasto installation kit No. 9025761\_ if the three mounting holes in the tank are used for installation.

- ▶ For hole dimensions and spacing see Fig. A on page 8
- ▶ Fit spacer sleeve and washer.
- ▶ Fit mounting bush.
- ▶ Secure fuel tank with the 3 bolts and collar nuts M8 tightened to 27 +0.5 Nm.

### 6.4 Pivoting take-off fitting with quick-release coupling (12 litre version)

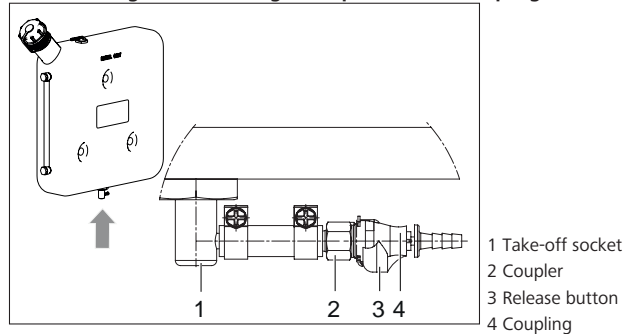


Fig. 5 Quick-release coupling

Align the pivoting take-off fitting with the fuel line:

- ▶ First screw in the take-off socket as far as it will go and tighten by hand (without using tools).
- ▶ Turn back the take-off socket to the required final position.
- ▶ Connect the fuel line to the heater.

The take-off socket is connected to the coupler by a short piece of hose. The coupler is self-closing, i.e. no fuel leaks out after disconnecting the fuel line from the coupling.

#### To release the quick-release coupling:

- ▶ Press the release button and pull off the coupling.

#### To reconnect:

- ▶ Push the coupling onto the coupler until the lock can be heard to snap in with a distinct click.

## 7 Initial start-up



Observe the vehicle manufacturer's specifications during initial start-up.

✓ Observe the following requirements:

1. Fuel tank is fully installed.
2. Make sure that the fuel lines are not leaking.

## 8 Statutory regulations governing installation

Failure to follow the installation instructions will result in the invalidation of the type manufacturer's warranty on the fuel tank and therefore invalidation of the general homologation of the vehicle.

### 8.1 Extract from Directive ECE R34

#### 5 REQUIREMENTS FOR LIQUID FUEL TANKS

- 5.4. The vents shall be designed in such a way as to prevent any fire risk. In particular, any fuel, which may leak when the tank(s) is (are) being filled shall not be able to fall on the exhaust system. It shall be channelled to the ground.
- 5.5. The tank(s) shall not be situated in, or form, a surface (floor, wall, bulkhead) of the passenger compartment or other compartment integral with it.
- 5.6. A partition shall be provided to separate the occupant compartment from the tank(s). The partition may contain apertures (e.g. to accommodate cables) provided they are so arranged that fuel cannot flow freely from the tank(s) into the occupant compartment or other compartment integral with it during normal conditions of use.
- 5.7. Every tank shall be securely fixed and so placed as to ensure that any fuel leaking from the tank or its accessories will escape to the ground and not into the occupant compartment during normal conditions of use.
- 5.8. The filler hole shall not be situated in the occupant compartment, in the luggage compartment or in the engine compartment.
- 5.10. Tanks shall be installed in such a way as to be protected from the consequences of a collision to the front or the rear of the vehicle; there shall be no protruding parts, sharp edges, etc. near the tank.
- 5.11. The fuel tank and its accessory parts shall be designed and installed in the vehicle in such a way that any ignition hazard due to static electricity shall be avoided. If necessary, measure(s) for charge dissipation shall be provided. The manufacturer shall demonstrate to the Technical Service the measure(s) which guarantee the fulfilling of these requirements.

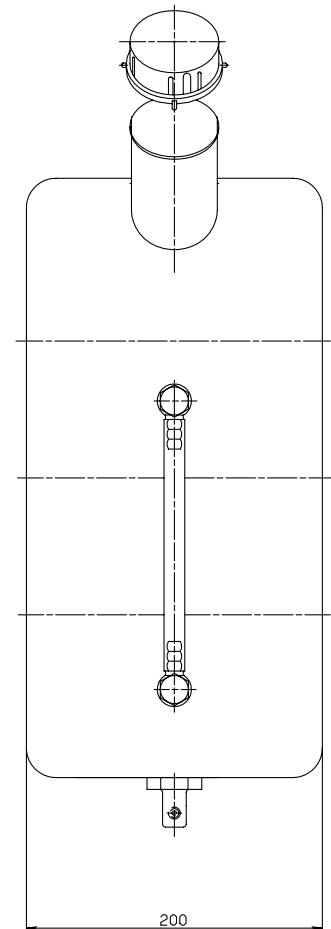
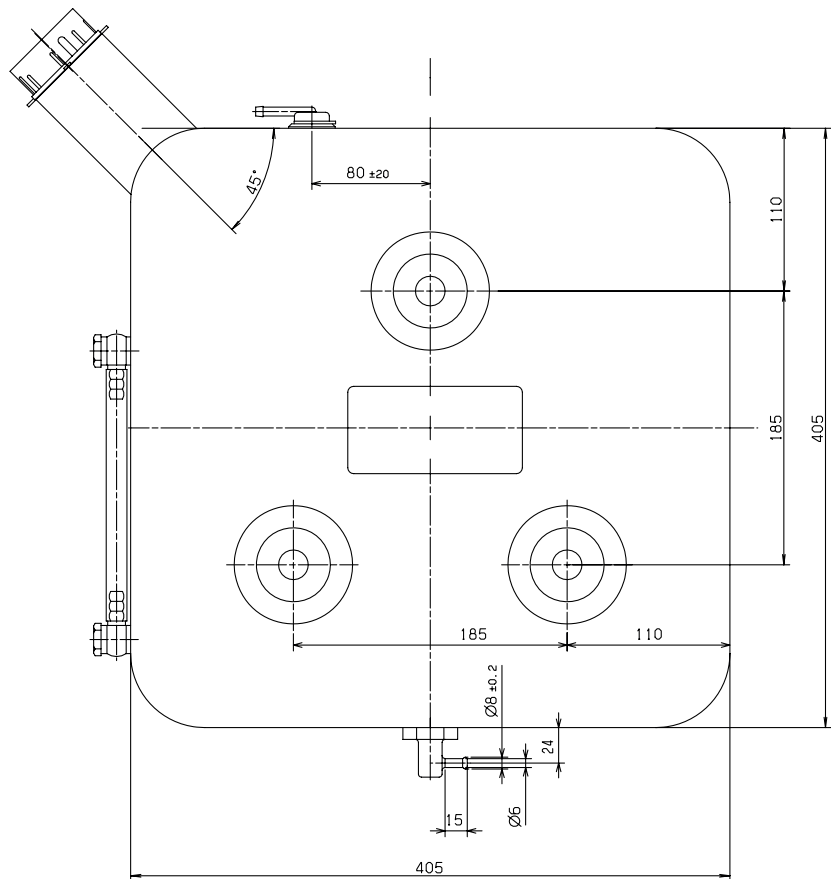
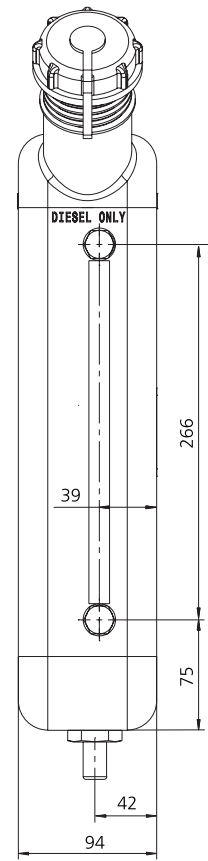
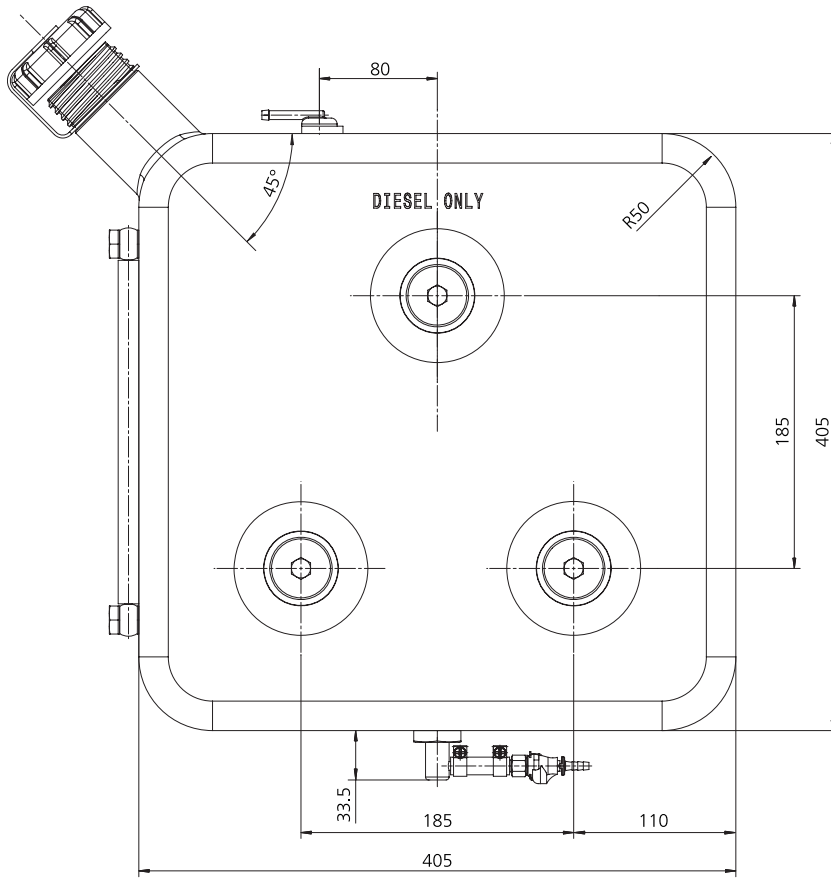
#### 8. REQUIREMENTS FOR THE INSTALLATION OF LIQUID FUEL TANKS

- 8.1.2. The components of the fuel installation shall be adequately protected by parts of the frame or bodywork against contact with possible obstacles on the ground. Such protection shall not be required if the components beneath the vehicle are further from the ground than the part of the frame or bodywork in front of them.
- 8.1.4. The connections of pliable or flexible pipes with rigid parts of components of the fuel installation shall be so designed and constructed as to remain leak-proof under the various conditions of use of the vehicle, despite twisting and bending movements and despite vibrations of the vehicle's structure or drive unit.
- 8.1.5. If the filler opening is located on the side of the vehicle, the filler cap when closed must not protrude beyond the adjacent surfaces of the vehicle body.

## 9 Technical data

Fuel tank	Variants	
	12	24
Volume [l]	12	24
Temperature range [°C]	-40 / +65	
Ambient temperature	< 95	
Tare weight [kg]	2.2	6





Bei mehrsprachiger Ausführung ist Deutsch verbindlich. Sollten Sprachen fehlen können diese angefordert werden.  
Die Telefonnummer des jeweiligen Landes entnehmen Sie bitte dem Webasto Servicestellen-Faltblatt oder der Webseite Ihrer jeweiligen Webasto-Landesvertretung.

In multilingual versions the German language is binding. You can request your language if it is missing. The telephone number of each country can be found in the Webasto service center leaflet or the website of the respective Webasto representative of your country.

Webasto Thermo & Comfort SE  
Postfach 1410  
82199 Gilching  
Germany

Firmenadresse:  
Friedrichshafener Str. 9  
82205 Gilching  
Germany

Technical Extranet: <http://dealers.webasto.com>