

Air Reservoirs

1st edition

This publication is not subject to any update service.
New versions are available in INFORM at
www.wabco-auto.com

© Copyright WABCO 2005

WABCO

Vehicle Control Systems

An American Standard Company

The right of amendment is reserved

Version 001/01.2005

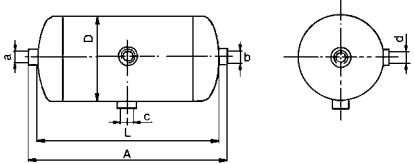
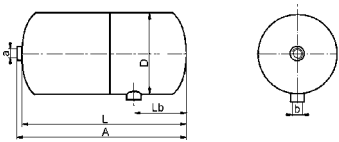
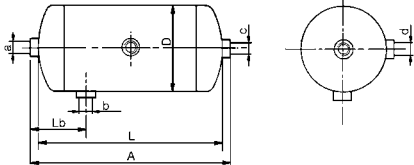
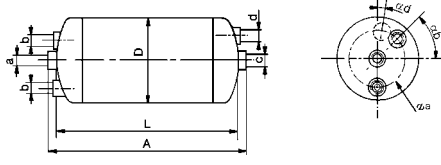
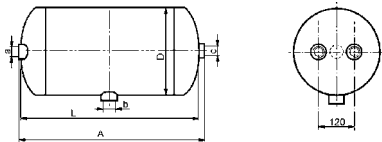
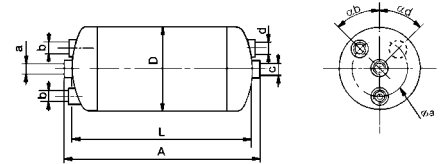
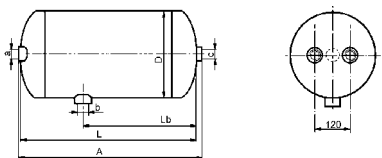
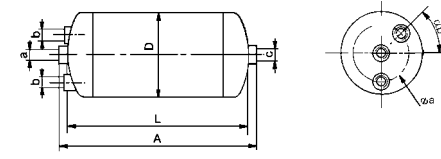
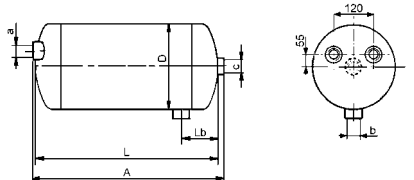
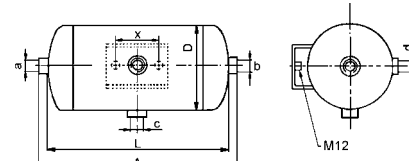
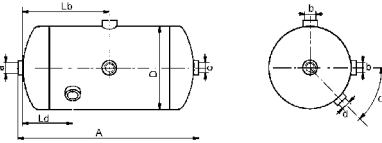
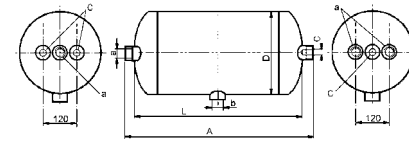
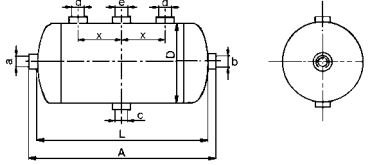
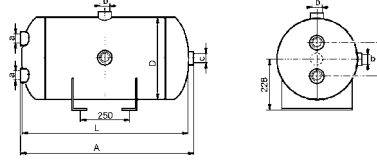
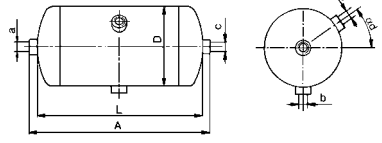
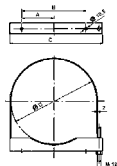
815 000 490 3 en

Summary

Safety Instructions / Introduction Page 4

Certificate

Page 5

| Type | Page | Type | Page |
|---|-------|--|------|
|  | 6 |  | 11 |
|  | 7 |  | 12 |
|  | 7 - 8 |  | 12 |
|  | 9 |  | 12 |
|  | 9 |  | 13 |
|  | 10 |  | 13 |
|  | 10 |  | 13 |
|  | 11 |  | 14 |
| | | Mounting | |

Safety Instructions



CAUTION

- Comply with the valid regulations for the use of air reservoirs.
- Use WABCO air reservoirs only up to the allowed pressure.
- It is strictly forbidden to weld any part on the air reservoir.
- Use WABCO air reservoirs only for Compressed Air Braking Systems in vehicles.
- The air reservoir should be in a low position as possible so that piping can be installed sloping downwards towards the reservoir.
- Drain the air reservoirs by drain valve.
- Usage of proper WABCO clamps is highly recommended.
- The name plate must be covered while painting to keep it readable.

WABCO designs and manufactures devices and systems intended for the braking of Industrial Vehicles. WABCO is since always the privileged partner of the large manufacturers of air reservoirs thanks to the experience, the means implemented, the quality and expertise of its engineers.

Since July 1992, Directive 87/404/CEE on the simple pressurized containers was introduced into all the European Convention countries and WABCO air reservoirs are now manufactured in accordance with this Directive. They also conform with the standard EN 286-2 which applies to the tanks of brake and the auxiliary circuit systems of the Industrial vehicles.

All the characteristics of design are defined with precision in the Directive, and reservoir WABCO fulfill the lawful requirements and go even beyond:

- The characteristics of the steels chosen for their ductility, their resistance and their weldability, confèrent with tanks WABCO an exceptional quality.
- The form of the shell and the end cover as well as the process of assembly allow a perfect alignment guaranteeing at the same time the quality of welding and the complete penetration this level of the painting of internal protection.
- The whole of the manufacturing process, which it acts of the welding, the unit tests or by taking away, of anti-corrosion painting guarantee the quality of WABCO air reservoirs.
- The manufacturing plant is certified ISO 9002, this is an additional pledge of quality of WABCO air reservoirs.

Design features

| | |
|---|-------------------|
| Range of operating pressure (PS): | 10 to 19 bar |
| Range of temperature of service: | - 50° to + 100 °C |
| Exceptional temperature (1 hour, without pressure): | + 120 °C |
| Volume: | 0,6 to 100 litres |
| Fluid: air Normalizes: | IN 286-2 |
| Homologation: | EC |



LINNEMANN-SCHNETZER
LINNEMANN-SCHNETZER GMBH (HOLDING)

- Pressure Vessel Information EN 286-2 - for users and first-time buyers

Accompanying documentation in accordance with EN 286-2 and EC Directive 87/404

Declaration of conformity in accordance with article 12 of the European Directive 87/404/EWG

We hereby declare on our own responsibility that the pressure vessels fulfil the requirements of the EN 286 part 2 and the European Directive 87/404/EWG and concur with the corresponding approved type pattern. As proof of this, the CE symbol and the registered number of the approval authority appear on the identification plaque.

The vessels are only for use in air braking systems and auxiliary systems on motor vehicles and their trailers and are intended to contain only air. The vessels are meant to be used predominantly with static pressure loading and they are designed for this purpose. The working pressure of the vessel may momentarily exceed the maximum permissible working pressure by 10 %.

For identification purposes, the vessel is marked with the pressure vessel manufacturer's name or logo (LS, EF, LSU or LSS), a serial number and the following identification data:

- Part no.
- Minimum permissible working temperature (°C)
- Maximum permissible working temperature (°C)
- Volume (litres)
- Maximum permissible working pressure (bar)
- Norm: EN 286 - 2: 1992: number and year of norm issue
- Year of manufacture
- CE 0044: EG-symbol in accordance with article 16 of the European Directive 87/404/EWG with the registered number of the authority which carries out the type pattern approval.

No welding, heat treatment or any other procedure may be carried out on any part the vessels. The vessels are to be mounted on the vehicle using straps or via brackets fitted on the vessels themselves. Here, it is important that the vessels are not subjected to stresses that could impair their safety in use. The mounting straps must not come into contact with the vessel end welds. Where accessories are fastened directly to the threaded bosses of the vessels a maximum moment of force of 110 Nmm is permissible. This dimension refers to the effective centre-of-gravity distance of the accessory to the end face of the threaded boss. In addition, the mounting instructions of the accessory manufacturers are to be observed.

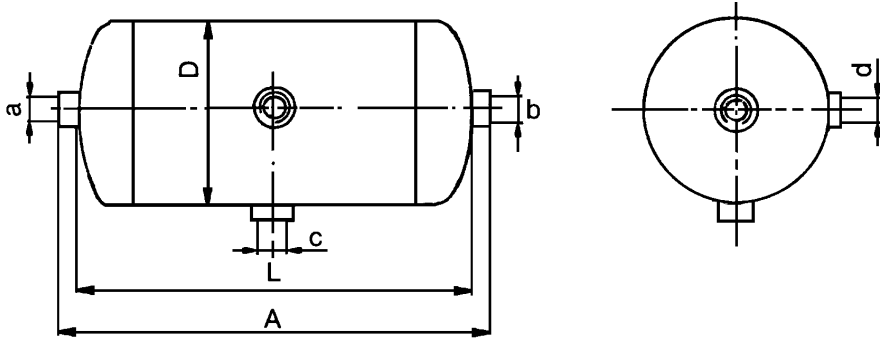
Material matings must be chosen in such a way that no corrosion can take place between them. If necessary these materials should be separated via elastic and solvent-resistant material. The interior of the steel vessels is corrosion protected. Until they are mounted on the vehicles, the vessels must be stored in a dry place. From the moment the vessel is delivered, the vehicle manufacturer is responsible for the corrosion protection of the vessel. The final top-coat applied by the vehicle manufacturer must guarantee the corrosion protection of the contact surfaces of the threaded mounting bosses and of the mounting accessories.

The interior of the vessels can be inspected through the boss openings. To prevent the build up of condensate, the vessels must be drained off daily, if the vehicle manufacturer does not specify another drainage interval. The vessel is to be mounted in such a way that the drainage valve is at the lowest point of the vessel. If all the requirements with regard to mounting and drainage are adhered to, the vessel is maintenance-free. To clean the vessels, only alkali-free detergents may be used.

Date: 01.03.03

Rev.: G

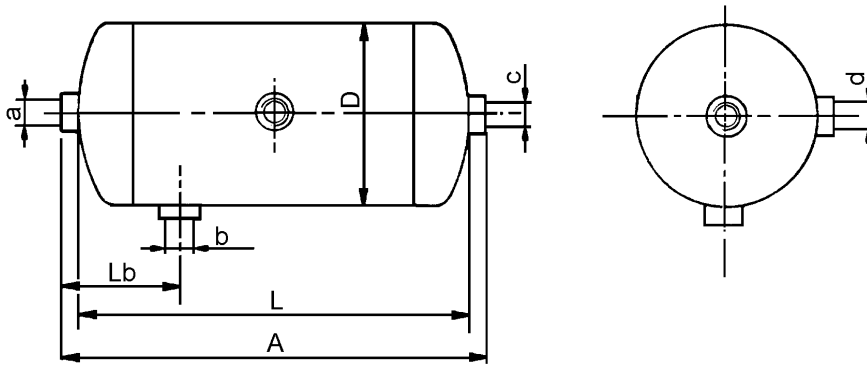
Air Reservoirs



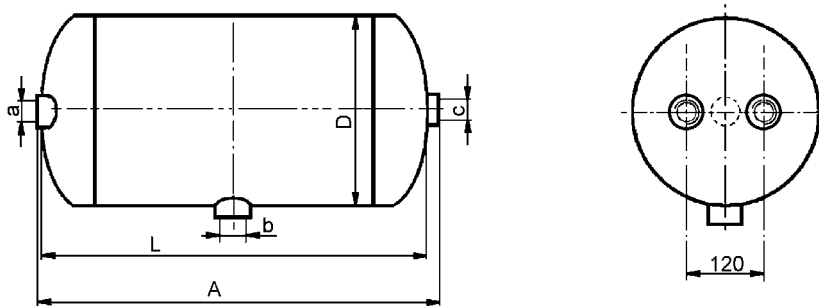
* Without port

| VOL Litres | Dimensions | | | | Ports | | | | Weight kg | Part Number |
|---------------|------------|-----|-----|--|------------|------|------|------|--------------|----------------|
| | D | A | L | | a | b | c | d | | |
| 0.6 | 101 | 125 | 103 | | 1/2" | 1/2" | * | * | 1 | 950 001 003 0 |
| 3.3 | 101 | 480 | 458 | | M 22 x 1.5 | | | * | 3 | 950 004 002 0 |
| 4 | 154 | 278 | 253 | | M 22 x 1.5 | | | * | 2.8 | 951 002 158 0 |
| 4.25 | 206 | 192 | 166 | | M 22 x 1.5 | | * | * | 2.8 | 951 002 157 0 |
| 10 | 154 | 615 | 590 | | M 22 x 1.5 | | | * | 5.1 | 950 110 002 0 |
| 20 | 250 | 503 | 476 | | M 22 x 1.5 | | | | 7.1 | 950 620 005 0 |
| 20 | 300 | 380 | 355 | | M 22 x 1.5 | | | | 8.8 | 950 820 001 0 |
| 25 | 246 | 610 | 584 | | M 22 x 1.5 | | | | 9.2 | 950 625 001 0 |
| 30 | 246 | 718 | 692 | | M 22 x 1.5 | | | | 9.7 | 950 630 006 0 |
| 30 | 250 | 708 | 688 | | 3/8" | 3/8" | 1/2" | 1/2" | 10.5 | 950 630 008 0 |
| 30 | 300 | 528 | 503 | | M 22 x 1.5 | | | | 11.1 | 950 830 004 0 |
| 40 | 276 | 745 | 712 | | M 22 x 1.5 | | | | 12.3 | 950 740 011 0 |
| 45 | 300 | 743 | 717 | | M 22 x 1.5 | | | | 14.2 | 950 845 002 0 |
| 60 | 300 | 966 | 940 | | M 22 x 1.5 | | | | 17.5 | 950 860 004 0 |

Air Reservoirs

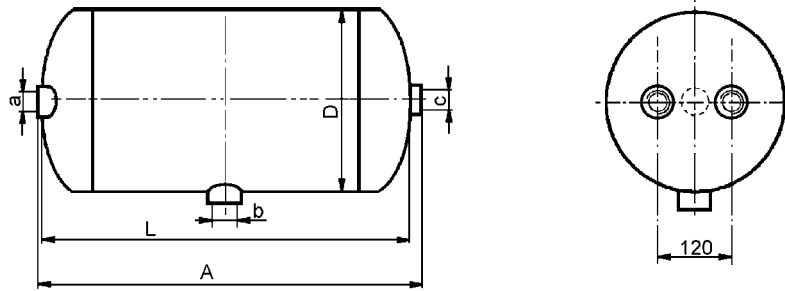


| VOL Litres | Dimensions | | | | Ports | | | | Weight kg | Part Number |
|---------------|------------|-----|-----|-----|------------|------|------|------|--------------|----------------|
| | D | A | L | Lb | a | b | c | d | | |
| 28 | 246 | 657 | 639 | 120 | M 22 x 1.5 | | | | 10 | 950 628 001 0 |
| 20 | 250 | 504 | 472 | 236 | 3/8" | 1/2" | 3/8" | 1/2" | 7.8 | 950 620 008 0 |



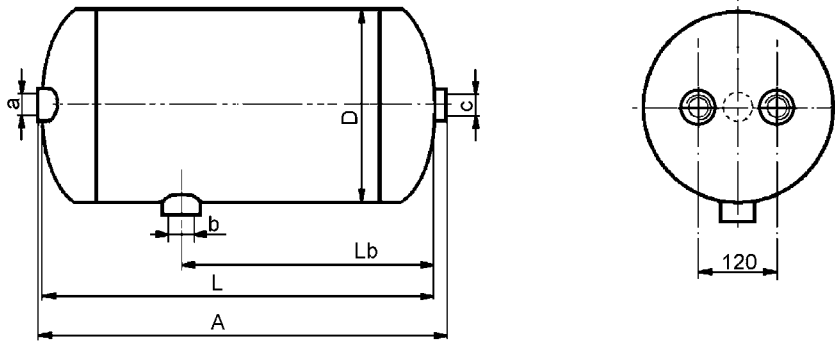
| VOL Litres | Dimensions | | | | Ports | | | | Weight kg | Part Number |
|---------------|------------|-----|-----|--|------------|---|---|--|--------------|----------------|
| | D | A | L | | a | b | c | | | |
| 4.5 | 206 | 185 | 174 | | M 22 x 1.5 | | | | 3 | 950 405 001 0 |
| 6 | 206 | 241 | 230 | | M 22 x 1.5 | | | | 3 | 950 406 001 0 |
| 10 | 206 | 368 | 357 | | M 22 x 1.5 | | | | 4.7 | 950 410 004 0 |
| 10 | 206 | 355 | 344 | | M 22 x 1.5 | | | | 4.5 | 950 410 902 0 |
| 15 | 206 | 527 | 516 | | M 22 x 1.5 | | | | 6.3 | 950 415 005 0 |
| 15 | 246 | 380 | 362 | | M 22 x 1.5 | | | | 5.9 | 950 515 003 0 |
| 16 | 246 | 411 | 394 | | M 22 x 1.5 | | | | 6:0 | 950 516 004 0 |
| 20 | 206 | 691 | 680 | | M 22 x 1.5 | | | | 8 | 950 420 003 0 |
| 20 | 246 | 495 | 478 | | M 22 x 1.5 | | | | 7.2 | 950 520 003 0 |
| 20 | 246 | 500 | 481 | | M 22 x 1.5 | | | | 7.5 | 950 520 015 0 |

Air Reservoirs

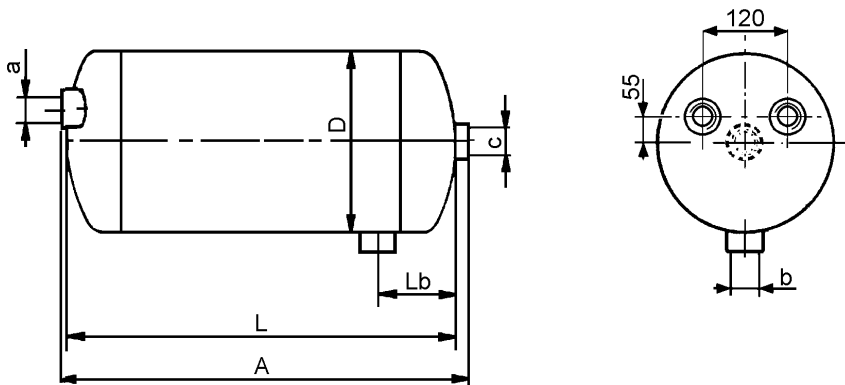


| VOL Litres | Dimensions | | | | Ports | | | | Weight kg | Part Number |
|---------------|------------|------|-------|--|-------|---|------------|--|--------------|----------------|
| | D | A | L | | a | b | c | | | |
| 20 | 276 | 414 | 395 | | | | M 22 x 1.5 | | 8.7 | 950 720 005 0 |
| 22 | 276 | 452 | 433 | | | | M 22 x 1.5 | | 7.6 | 950 722 002 0 |
| 25 | 246 | 601 | 584 | | | | M 22 x 1.5 | | 8.8 | 950 525 001 0 |
| 30 | 206 | 992 | 981 | | | | M 22 x 1.5 | | 11.2 | 950 430 001 0 |
| 30 | 206 | 989 | 977 | | | | 1/2" | | 11.2 | 950 430 002 0 |
| 30 | 246 | 709 | 692 | | | | M 22 x 1.5 | | 10.0 | 950 530 002 0 |
| 30 | 246 | 700 | 681 | | | | M 22 x 1.5 | | 10.1 | 950 530 012 0 |
| 30 | 276 | 583 | 564 | | | | M 22 x 1.5 | | 9.0 | 950 730 007 0 |
| 33 | 276 | 638 | 619 | | | | M 22 x 1.5 | | 9.8 | 950 733 002 0 |
| 37 | 246 | 862 | 845 | | | | M 22 x 1.5 | | 11.9 | 950 537 001 0 |
| 37 | 246 | 850 | 831 | | | | M 22 x 1.5 | | 12.7 | 950 537 004 0 |
| 40 | 246 | 927 | 910 | | | | M 22 x 1.5 | | 12.7 | 950 540 001 0 |
| 40 | 276 | 758 | 739 | | | | M 22 x 1.5 | | 11.5 | 950 740 002 0 |
| 60 | 246 | 1365 | 1348 | | | | M 22 x 1.5 | | 18 | 950 560 002 0 |
| 60 | 276 | 1108 | 1089 | | | | M 22 x 1.5 | | 16.2 | 950 760 002 0 |
| 60 | 310 | 893 | 874 | | | | M 22 x 1.5 | | 16.2 | 950 060 003 0 |
| 60 | 310 | 880 | 860 | | | | M 22 x 1.5 | | 16.8 | 950 960 000 0 |
| 60 | 396 | 580 | 559.5 | | | | M 22 x 1.5 | | 16.3 | 950 060 004 0 |
| 80 | 396 | 750 | 729 | | | | M 22 x 1.5 | | 20.5 | 950 080 002 0 |
| 100 | 396 | 915 | 894.5 | | | | M 22 x 1.5 | | 24.5 | 950 100 002 0 |

Air Reservoirs

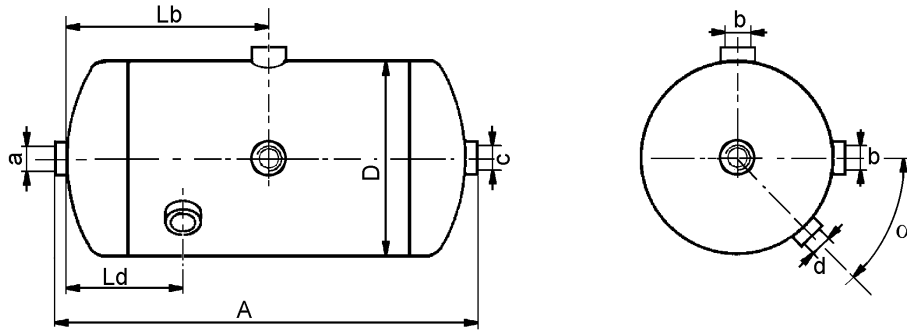


| VOL Litres | Dimensions | | | | Ports | | | | Weight kg | Part Number |
|---------------|------------|-----|-----|-------|------------|---|---|--|--------------|----------------|
| | D | A | L | Lb | a | b | c | | | |
| 27 | 246 | 645 | 628 | 449.5 | M 22 x 1.5 | | | | 8.9 | 950 527 005 0 |



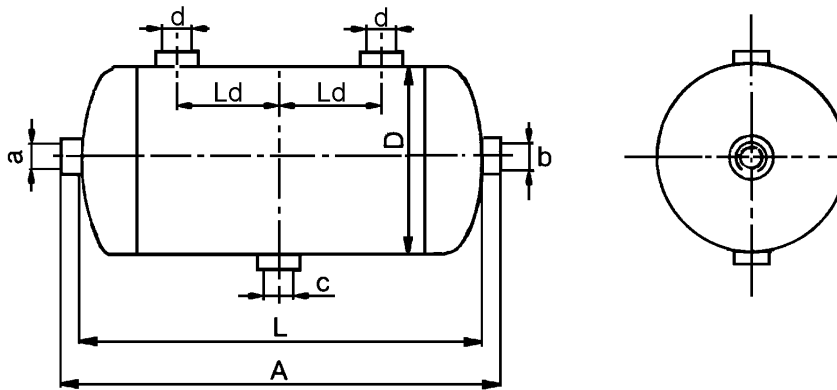
| VOL Litres | Dimensions | | | | Ports | | | | Weight kg | Part Number |
|---------------|------------|-----|-----|-----|------------|---|---|--|--------------|----------------|
| | D | A | L | Lb | a | b | c | | | |
| 20 | 246 | 487 | 478 | 107 | M 22 x 1.5 | | | | 7.4 | 950 620 006 0 |

Air Reservoirs



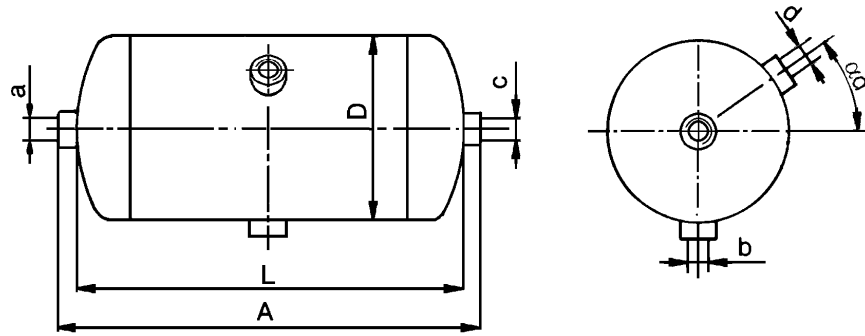
* Without port

| VOL Litres | Dimensions | | | | | Ports | | | | Weight kg | Part Number |
|---------------|------------|-----|-----|-----|----------|------------|---|---|---|--------------|----------------|
| | D | A | Lb | Ld | α | a | b | c | d | | |
| 36 | 300 | 603 | 254 | 153 | 45° | M 22 x 1.5 | | | | 12.3 | 950 836 001 0 |
| 36 | 300 | 610 | 271 | * | * | M 22 x 1.5 | | | * | 11.1 | 950 836 002 0 |

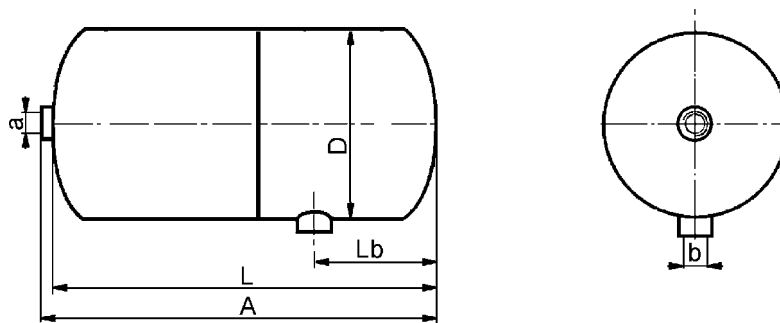


| VOL Litres | Dimensions | | | | | Ports | | | | Weight kg | Part Number |
|---------------|------------|-----|-----|-----|--|-------|---|---|---|--------------|----------------|
| | D | A | L | Ld | | a | b | c | d | | |
| 30 | 250 | 706 | 685 | 225 | | 1/2" | | | | 10 | 950 630 001 0 |

Air Reservoirs

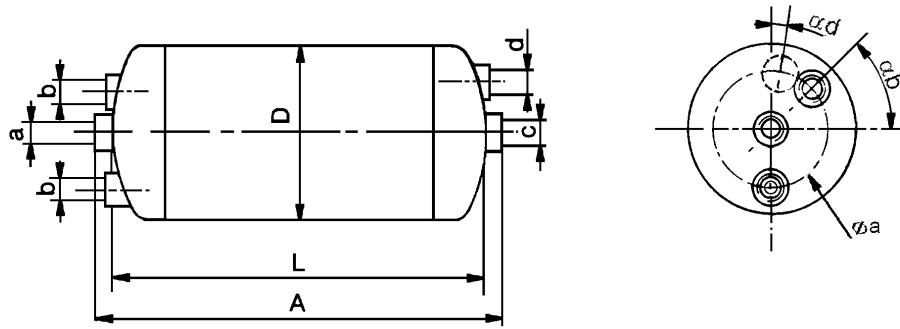


| VOL Litres | Dimensions | | | | Ports | | | | Weight kg | Part Number |
|---------------|------------|-----|-----|------------|------------|------|------|------|--------------|----------------|
| | D | A | L | αd | a | b | c | d | | |
| 20 | 246 | 503 | 478 | 45° | M 22 x 1.5 | | | | 7.1 | 950 620 007 0 |
| 30 | 246 | 718 | 692 | 25° | M 22 x 1.5 | | | | 12 | 950 630 005 0 |
| 30 | 250 | 708 | 688 | 25° | 3/8" | 1/2" | 3/8" | 1/2" | 10.5 | 950 630 007 0 |

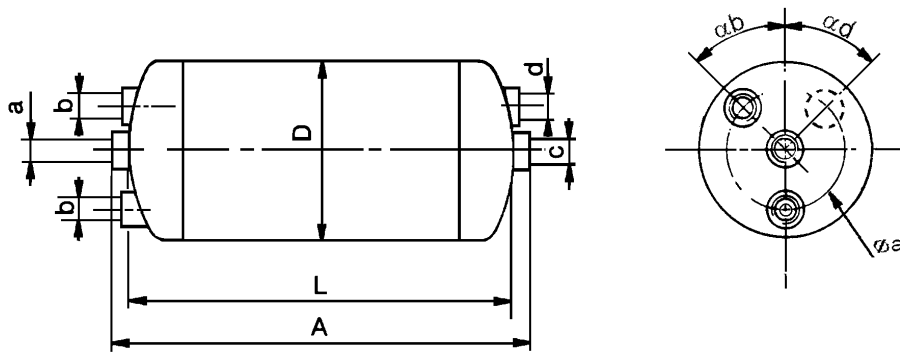


| VOL Litres | Dimensions | | | | Ports | | | | Weight kg | Part Number |
|---------------|------------|-----|-----|----|------------|---|--|--|--------------|----------------|
| | D | A | L | Lb | a | b | | | | |
| 1 | 102 | 170 | 158 | 52 | M 22 x 1.5 | | | | 1.1 | 951 005 010 0 |
| 1 | 106 | 180 | 168 | 54 | 1/2" | | | | 1.1 | 951 005 012 0 |

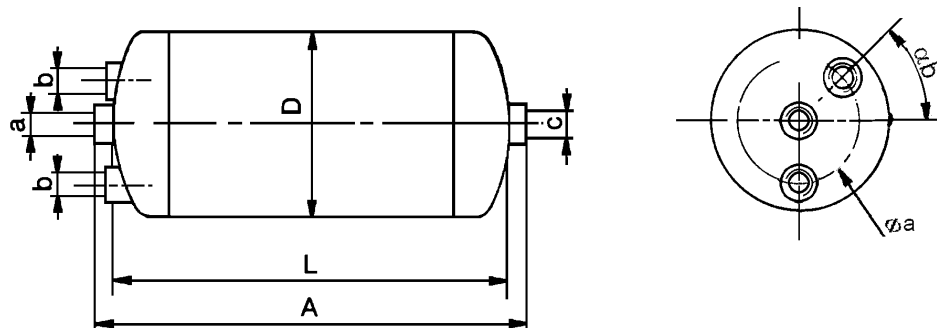
Air Reservoirs



| VOL Litres | Dimensions | | | | Ports | | | | | Weight kg | Part Number |
|---------------|------------|-------|-----|----------|------------|---|-----|------------|------------|--------------|----------------|
| | D | A | L | ϕa | a | b | c-d | αb | αd | | |
| 30 | 276 | 590.5 | 565 | 190 | M 22 x 1.5 | | | 45° | 10° | 9.7 | 950 730 006 0 |

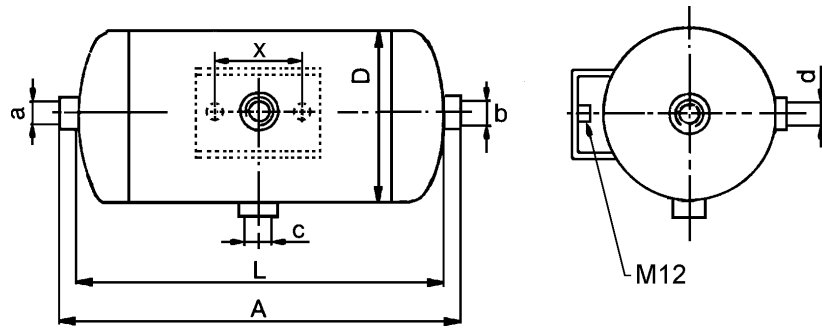


| VOL Litres | Dimensions | | | | Ports | | | | | Weight kg | Part Number |
|---------------|------------|-------|-----|----------|------------|---|---|-----|---------------------|---------------|----------------|
| | D | A | L | ϕa | a | b | c | d | $\alpha b \alpha d$ | | |
| 15 | 206 | 545.5 | 520 | 130 | M 22 x 1.5 | | | 45° | 6.7 | 950 315 003 0 | |

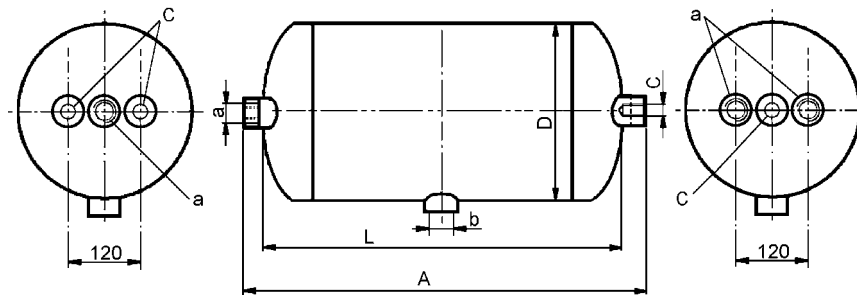


| VOL Litres | Dimensions | | | | Ports | | | | Weight kg | Part Number |
|---------------|------------|-----|-----|----------|------------|---|---|------------|--------------|----------------|
| | D | A | L | ϕa | a | b | c | αb | | |
| 30 | 246 | 729 | 700 | 160 | M 22 x 1.5 | | | 45° | 10 | 950 630 004 0 |

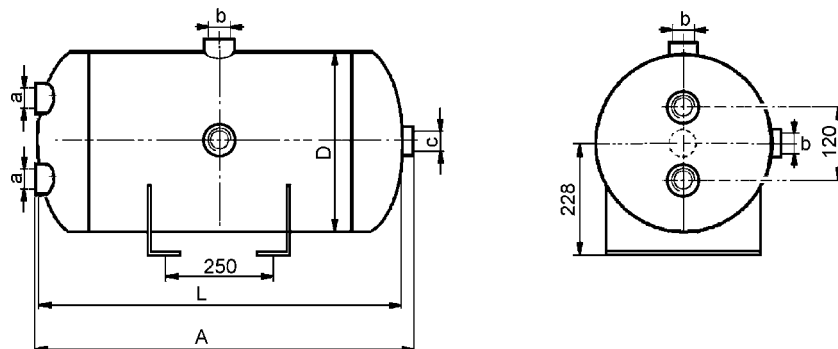
Air Reservoirs



| VOL Litres | Dimensions | | | | Ports | | | | Weight kg | Part Number |
|---------------|------------|-----|-----|----|------------|---|---|---|--------------|----------------|
| | D | A | L | x | a | b | c | d | | |
| 5 | 154 | 341 | 315 | 78 | M 22 x 1.5 | | | | 3.4 | 950 105 001 0 |

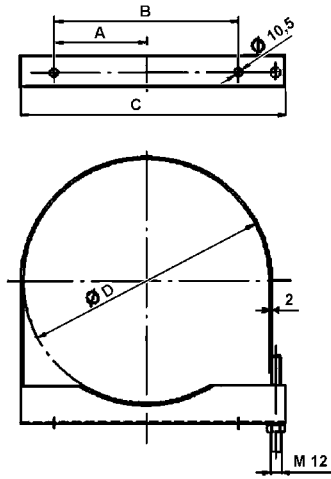


| VOL Litres | Dimensions | | | Fixations C | Ports | | Weight kg | Part Number |
|---------------|------------|-----|-----|----------------|------------|---|--------------|----------------|
| | D | A | L | | a | b | | |
| 20 | 246 | 519 | 478 | M 10 x 1.5 | M 22 x 1.5 | | 7.2 | 950 520 009 0 |



| VOL Litres | Dimensions | | | | Ports | | | Weight kg | Part Number |
|---------------|------------|-------|-----|--|------------|---|---|--------------|----------------|
| | D | A | L | | a | b | c | | |
| 80 | 396 | 750.5 | 730 | | M 22 x 1.5 | | | 23.6 | 950 080 009 0 |

Mounting



| Diameter Reservoir | Dimensions | | | Part Number Mounting |
|--------------------|------------|-----|-----|----------------------|
| | A | B | C | |
| 200-206 | 56.5 | 125 | 225 | 451 999 206 2 |
| 246-250 | 78.5 | 165 | 265 | 451 999 246 2 |
| 276 | 92.5 | 195 | 295 | 451 999 276 2 |
| 300-310 | 108.5 | 230 | 330 | 451 999 310 2 |
| 396 | 155.8 | 315 | 410 | 451 999 396 2 |

