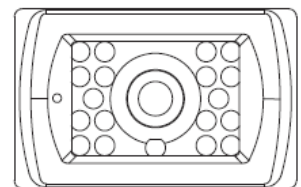
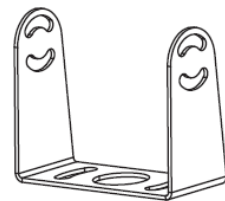
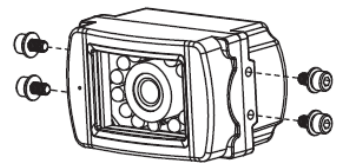


AUTOMOTIVE REAR VIEW CAMERA

RVC 3.0



Subject to availability and technical modification.

Sales Start

JUNE 2019

Order Number

2 009 019 000 001

EAN-Code

4 260 499 851 934

Highlights

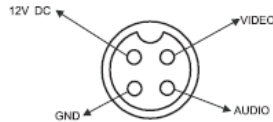
- 12-V external mounting type Rear View Camera
- PAL TV System
- High Performance CCD Sensor
- IR LED Low Light Enhancement
- Waterproof (IP69K)
- Wide View Angle 95 (H), 80 (V), 120 (D)
- Audio Microphone & Heater
- Signal to noise ratio: better than 48 dB
- Auto White balance
- Auto electronic shutter
- Resolution: 700 TV lines
- Min. illumination 1.0 Lux at F2.0
- 0 Lux with IR on
- Dimension: 77 (W), 44.6 (H), 55 (D) mm
- Working temperature: -30 C ~ +70 C
- Weight: approx. 0.50 Kg
- White housing

AUTOMOTIVE REAR VIEW CAMERA RVC 3.0

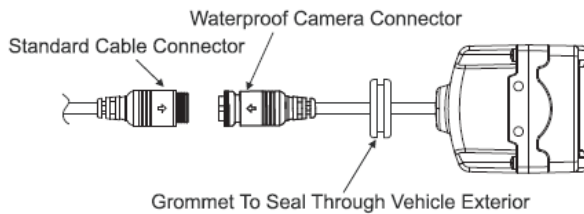
2/2

Contents:

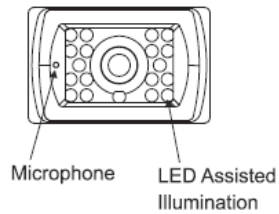
Camera
Bracket
Hardware Kit



Installation and Pin Out:

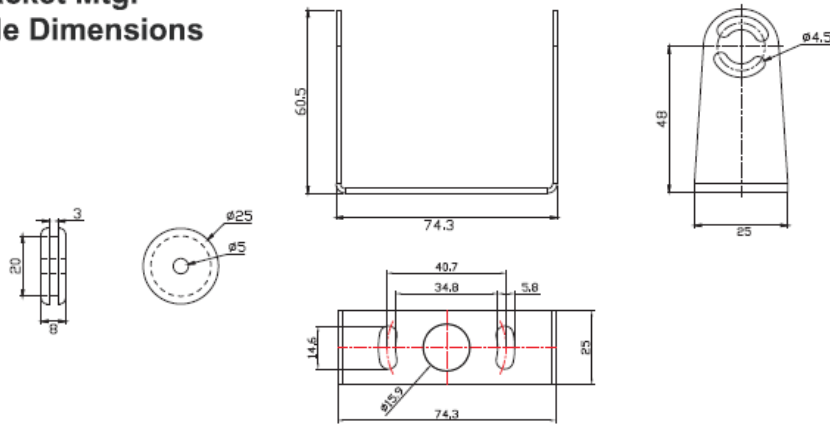


Cable Connector End View



1

Bracket Mtg. Hole Dimensions



Unit: MM

2

Recommended grommet Hole

