



## WHY OUR NEW PATENTED IMPACT WRENCH IS THE BEST CHOICE

### POWERFUL

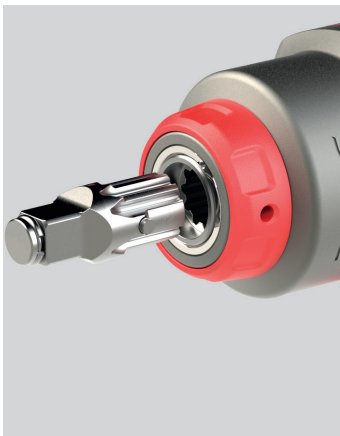
Industry's most compact high torque impact wrench delivering 2034 Nm of breakaway torque while weighing less than 1.99 kg and in a length under 187 mm

### VERSATILE

Interchangeable drives can quickly configure this tool for the job without losing power, increasing size or needing more tools

### DURABLE

More legendary durability from an unyielding titanium hammer case and a patented direct hammer lubrication system



# 2236QTiMAX IMPACT WRENCH

**DXS<sup>2</sup>** Drive Xchange System™



# INTERCHANGEABLE GAME-CHANGER

## Ingersoll Rand® 2236 MAX Series 1/2" Impact Wrench



irtools.com/DXS

### Introducing the Ingersoll Rand® 2236 MAX Series.

Versatility meets power in the new Ingersoll Rand 1/2" pneumatic impact wrench. The patented\* Drive Xchange System™ lets you switch out anvils without clunky adapters that drain your tool's power.



### AVAILABLE CONFIGURATIONS



**2236QTIMAX**  
Standard Friction Ring Anvil



**2236QPTIMAX**  
Standard Pin Anvil



**2236QTIMAX-2**  
2" Extended Friction Ring Anvil

**Longer Life**  
Reliability from a patented direct greasing design

**MAX Versatility**  
Patented DXS Drive Xchange System™

**Interchangeable anvils including:**  
3/8, 1/2, and 3/4 inch drive options and five lengths from 2 to 10 inches (13 to 254 mm)

**AVAILABLE DRIVE SIZES**

**AK33H**  
3/8", 1/2", 3/4"

**AK43H**  
3/4", 1/2 x 2", 1/2 x 4"

**Titanium Hammer Case**  
Lightweight with unyielding durability

**274 Nm More Powerful**  
2034 Nm of Nut busting Torque from a patented motor design\*\*

**Quiet Tool Technology**  
Protecting your ears from free speed noise

**Compact size**  
Shorter than previous 2235 for better access

**Ergonomic Handle Design**  
Reduced fatigue from lower weight, better balance

**274 Nm More Powerful**  
2034 Nm of Nut busting Torque from a patented motor design\*\*

**Quiet Tool Technology**  
Protecting your ears from free speed noise

**Compact size**  
Shorter than previous 2235 for better access

**Ergonomic Handle Design**  
Reduced fatigue from lower weight, better balance

\* Global Patents Pending  
\*\* Compared to IR 2235QTIMAX

Model	Drive Size	Breakaway Torque Nm	Impact Per Minute (BPM)	MAX Free Speed (RPM)	Impacting Sound Level dB(A)	Weight kg	Length mm	Air Inlet (NPTF/NPT)	Min Hose Size mm
2236QTIMAX	1/2" Standard Anvil	2034	1350	7500	94.2	1.99	187	1/4"	10
2236QTIMAX-2	1/2 x 2" Extended Anvil	2034	1350	7500	94.2	2.1	238	1/4"	10
2236QPTIMAX	1/2" Pin Anvil	2034	1350	7500	94.2	1.99	187	1/4"	10

DRIVE KITS	Kit Details
AK32H	2-pc Kit Includes: 3/8", 1/2" Std
AK33H	3-pc Kit Includes: 3/8", 1/2" Std, 3/4" Std
AK42H	2-pc Kit Includes: 1/2 x 2" Ext, 3/4" Std
AK43H	3-pc Kit Includes: 1/2 x 2" Ext, 1/2 x 4" Ext, 3/4" Std
AK62H	2-pc Kit Includes: 1/2" Std, 3/4" Std
EAK62H	2-pc Kit Includes: 3/4" Std, 3/4 x 6" Ext
EAK44H	4-pc Kit Includes: 1/2 x 4", 6", 8", 10" Ext



Ingersoll Rand (NYSE:IR), driven by an entrepreneurial spirit and ownership mindset, is dedicated to helping make life better for our employees, customers and communities. Customers lean on us for our technology-driven excellence in mission-critical flow creation and industrial solutions across 40+ respected brands where our products and services excel in the most complex and harsh conditions. Our employees develop customers for life through their daily commitment to expertise, productivity and efficiency.

©2023 Ingersoll Rand. IRVS-1123-045-EUEN\_2236QTIMAX\_ImpactWrench\_flyer