

## G Installation documentation

### Climate control "Webasto Standard" for water heater Thermo Top Evo

Renault Talisman / Espace

Left-hand drive vehicle

| Manufacturer | Model    | Type | Model year | EG-BE-No. / ABE        |
|--------------|----------|------|------------|------------------------|
| Renault      | Talisman | RFD  | from 2016  | e11* 2007/46* 2969*... |
| Renault      | Espace   | RFC  | from 2016  | e2* 2007/46* 0470*...  |

| Validity                    | Equipment variants                | Model    |        |
|-----------------------------|-----------------------------------|----------|--------|
|                             |                                   | Talisman | Espace |
| Verified equipment variants | 2 zone automatic air-conditioning | x        | x      |
|                             | 3 zone automatic air-conditioning | ---      | x      |

---

# Contents

|           |                                                                        |           |           |                                               |           |
|-----------|------------------------------------------------------------------------|-----------|-----------|-----------------------------------------------|-----------|
| <b>1</b>  | <b>List of abbreviations</b>                                           | <b>3</b>  | <b>11</b> | <b>Operating instructions for Renault Es-</b> | <b>33</b> |
| <b>2</b>  | <b>Installation notes</b>                                              | <b>4</b>  |           | <b>pace from model year 2022</b>              |           |
| 2.1       | Information on Validity                                                | 4         | 11.1      | A/C control panel settings                    | 33        |
| 2.2       | Components used                                                        | 4         | 11.2      | Installation location of fuses                | 34        |
| 2.3       | Validity Notes                                                         | 4         |           |                                               |           |
| <b>3</b>  | <b>About this document</b>                                             | <b>5</b>  |           |                                               |           |
| 3.1       | Purpose of the document                                                | 5         |           |                                               |           |
| 3.2       | Warranty and liability                                                 | 5         |           |                                               |           |
| 3.3       | Safety                                                                 | 5         |           |                                               |           |
| 3.4       | Using this document                                                    | 6         |           |                                               |           |
| <b>4</b>  | <b>Technical Information</b>                                           | <b>7</b>  |           |                                               |           |
| <b>5</b>  | <b>Preparations</b>                                                    | <b>8</b>  |           |                                               |           |
| 5.1       | Vehicle preparation                                                    | 8         |           |                                               |           |
| <b>6</b>  | <b>Installation overview</b>                                           | <b>9</b>  |           |                                               |           |
| <b>7</b>  | <b>Electrical system</b>                                               | <b>11</b> |           |                                               |           |
| 7.1       | Electrical system preparation, all vehicles                            | 11        |           |                                               |           |
| 7.2       | Electrical system preparation, Renault Talisman                        | 12        |           |                                               |           |
| 7.3       | Electrical system preparation, Renault Espace                          | 13        |           |                                               |           |
| 7.4       | System wiring diagram, vehicles with cold start system                 | 15        |           |                                               |           |
| 7.5       | System wiring diagram, vehicle without cold start system               | 16        |           |                                               |           |
| 7.6       | Legend to the system wiring diagrams                                   | 17        |           |                                               |           |
| 7.7       | Fan controller, all vehicles                                           | 18        |           |                                               |           |
| 7.8       | Fan controller, Renault Talisman                                       | 19        |           |                                               |           |
| 7.9       | Fan controller, Renault Espace                                         | 21        |           |                                               |           |
| 7.9.1     | Installation up to model year 2021                                     | 22        |           |                                               |           |
| 7.9.2     | Installation from model year 2022                                      | 23        |           |                                               |           |
| 7.10      | Connection of central electrical box, all vehicles                     | 24        |           |                                               |           |
| 7.11      | Connecting air-conditioning control unit, all vehicles                 | 25        |           |                                               |           |
| <b>8</b>  | <b>Final work</b>                                                      | <b>26</b> |           |                                               |           |
| <b>9</b>  | <b>Operating instructions for Renault Talisman</b>                     | <b>29</b> |           |                                               |           |
| 9.1       | A/C control panel settings                                             | 29        |           |                                               |           |
| 9.2       | Installation location of fuses                                         | 30        |           |                                               |           |
| <b>10</b> | <b>Operating instructions for Renault Espace up to model year 2021</b> | <b>31</b> |           |                                               |           |
| 10.1      | A/C control panel settings                                             | 31        |           |                                               |           |
| 10.2      | Installation location of fuses                                         | 32        |           |                                               |           |

---

# 1 List of abbreviations

|      |                                                |
|------|------------------------------------------------|
| LIN  | LIN Gateway                                    |
| RSH  | Relay and fuse holder of passenger compartment |
| Veh. | Vehicle                                        |
| Wire | Cable                                          |

## 2 Installation notes

### 2.1 Information on Validity

This installation documentation applies to vehicles listed on page 1, assuming technical modifications to the vehicle do not affect installation, any liability claims excluded. Depending on the vehicle version and equipment, modifications may be necessary during installation with respect to this installation documentation. Vehicle and engine types, equipment variants and other specifications not listed in this installation documentation have not been tested.

### 2.2 Components used

| Designation                                                                                    | Order number |
|------------------------------------------------------------------------------------------------|--------------|
| Additional 'Webasto Standard' A/C control kit for Renault Talisman / Espace with automatic A/C | 1324475B     |

### 2.3 Validity Notes

This installation documentation applies only in combination with:

| Designation                                                      | Order number |
|------------------------------------------------------------------|--------------|
| Installation kit for Renault Espace petrol 2016 TT-Evo           | 1325450_     |
| Installation documentation for Renault Espace petrol 2016 TT-Evo | 1325451_     |

or

| Designation                                                          | Order number |
|----------------------------------------------------------------------|--------------|
| Installation kit for Renault Espace 1.6 diesel 2016 TT-Evo           | 1324173_     |
| Installation documentation for Renault Espace 1.6 diesel 2016 TT-Evo | 1324174_     |

or

| Designation                                                          | Order number |
|----------------------------------------------------------------------|--------------|
| Installation kit for Renault Espace 2.0 diesel 2019 TT-Evo           | 1327460_     |
| Installation documentation for Renault Espace 2.0 diesel 2019 TT-Evo | 1327461_     |

or

| Designation                                                                       | Order number |
|-----------------------------------------------------------------------------------|--------------|
| Installation kit for Renault Talisman petrol and 1.6 diesel 2016 TT-Evo           | 1325067_     |
| Installation documentation for Renault Talisman petrol and 1.6 diesel 2016 TT-Evo | 1325068_     |

or

| Designation                                                            | Order number |
|------------------------------------------------------------------------|--------------|
| Installation kit for Renault Talisman 2.0 diesel 2019 TT-Evo           | 1327458_     |
| Installation documentation for Renault Talisman 2.0 diesel 2019 TT-Evo | 1327459_     |

---

## 3 About this document

### 3.1 Purpose of the document

This installation documentation is part of the product and contains all the information required to ensure professional vehicle specific installation of the:

|                       |
|-----------------------|
| Thermo Top Evo heater |
|-----------------------|

### 3.2 Warranty and liability

Webasto shall assume no liability for defects, damage and injuries resulting from a failure to observe the installation, repair and operating instructions of the information contained in them.

This liability exclusion particularly applies to improper installations and repairs by untrained persons or in the case of a failure to use genuine spare parts.

The liability due to culpable disregard to life, limb or health and due to damage or injuries caused by a wilful or reckless breach of duty remain unaffected, as does the obligatory product liability.

Installation should be carried out according to the general, standard rules of technology. Unless specified otherwise, fasten hoses, lines and wiring harnesses to original vehicle lines and wiring harnesses using cable ties. Insulate loose wire ends and tie back. Connectors on electronic components must audibly snap into place during assembly.

Spray unfinished body areas, e.g. drilled holes, with anti-corrosion wax (Tectyl 100K).

Observe the instructions and guidelines of the respective vehicle manufacturer for demounting and mounting vehicle specific components.

The initial start-up is to be executed with the Webasto Thermo Test Diagnosis.

When installing a programmable control module (e.g. a PWM Gateway), the corresponding settings must be checked or adjusted.

#### 3.2.1 Statutory regulations governing installation

The Thermo Top Evo heater has been type-tested and approved in accordance with ECE-R 10 (EMC) and ECE-R 122 (heater). The regulations of these guidelines are binding in the scope of the Directive 70/156/EEC and/or 2007/46/EC (for new vehicle models from 29/04/2009) and should also be observed in countries in which there are no special regulations.

The heater is licensed in accordance with paragraph 19, section 3, No. 2b of the StVZO (German Road Traffic Licensing Authority).

### 3.3 Safety

#### Qualifications of installation personnel

The installation personnel must have the following qualifications:

- Successful completion of Webasto training
- Corresponding qualification for working on technical systems

#### Regulations and legal requirements

The regulations from the heater's general installation and operating instructions must be observed.

#### 3.3.1 Safety information on installation

##### Danger posed by live parts

- ▶ Prior to installation, disconnect the vehicle from the voltage supply.
- ▶ Make sure the electrical system is earthed correctly.
- ▶ Always comply with legal requirements.
- ▶ Observe data on type label.

##### Danger of fire and leaking toxic gases due to improper installation

- ▶ Vehicle parts in the vicinity of the heater must be protected against excessive heating by the following measures:
  - ⇒ Maintain minimum safety distances.
  - ⇒ Ensure adequate ventilation.
  - ⇒ Use fire-resistant materials or heat shields.

##### Danger due to sharp edges

- Lacerations
- Short circuit due to electrical wire damage
- ▶ Fit protectors on sharp edges.

### 3.4 Using this document

Before installing, read this installation documentation, the installation instructions of the heater, the operating instructions and supplementary sheets provided.

#### 3.4.1 Explanatory Notes on the Document

There is an identification mark near the respective work step to allow you to quickly allocate the other applicable documents to the Webasto components to be installed:

|                                                                   |  |
|-------------------------------------------------------------------|--|
| Generally valid Webasto documentation                             |  |
| Vehicle-specific installation documentation                       |  |
| Vehicle-specific installation documentation of the cold start kit |  |
| Webasto Comfort A/C control                                       |  |
| Webasto Standard A/C control                                      |  |
| Tank extracting device (e.g. FuelFix)                             |  |
| Exhaust end fastener (EFIX)                                       |  |
| Combustion air intake silencer                                    |  |
| Spacer bracket (ASH)                                              |  |

#### 3.4.2 Use of symbols



#### DANGER

Type and source of the risk

Consequences: Failure to follow the instructions can result in death.

► Actions to protect yourself against risks.



#### WARNING

Type and source of the risk

Consequences: Failure to follow the instructions can lead to serious or even fatal injuries.

► Actions to protect yourself against risks.



#### CAUTION

Type and source of the risk

Consequences: Failure to follow the instructions can lead to minor injuries.

► Actions to protect yourself against risks.



Type and source of the risk

Consequences: Failure to follow the instructions can lead to material damage.

► Actions to protect yourself against risks.



Reference to the vehicle manufacturer's specific documents.



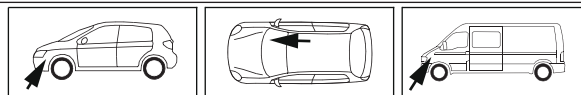
Note on a special technical feature

#### 3.4.3 Work step identification marks

The ongoing work step is indicated on the outside top corner of the page:

|                   |                   |              |          |
|-------------------|-------------------|--------------|----------|
| Mechanical system | Electrical system | High-voltage | Coolant  |
|                   |                   |              |          |
| Combustion air    | Fuel              | Exhaust      | Software |
|                   |                   |              |          |

#### 3.4.4 Orientation aid



The arrow indicates the position on the vehicle and the viewing angle.

#### 3.4.5 Use of highlighting

| Highlight                        | Explanation                                                                                                      |
|----------------------------------|------------------------------------------------------------------------------------------------------------------|
| ✓                                | Action                                                                                                           |
| ►                                | Necessary action                                                                                                 |
| ⇒                                | Result of an action                                                                                              |
| <b>1</b> / <b>12</b> / <b>a1</b> | Position numbers for the image descriptions                                                                      |
| <b>①</b> / <b>⑫</b> / <b>Ⓐ</b>   | Position numbers for the image descriptions for electrical wires and components as well as coolant hose sections |

---

## 4 Technical Information

### Dimension specifications

- All dimensions specified in mm
- Perforated brackets and mounting angles are shown to scale
- Observe data regarding scale on the templates

### Tightening torque specifications

- Tighten all screw connections in accordance with manufacturer's instructions or in accordance with state-of-the-art-technology

### Necessary special tools


- Automatic wire stripper 0.2 - 6 mm<sup>2</sup>
- Crimping pliers for cable lugs 0.5 – 10 mm<sup>2</sup>
- Crimping pliers for male connector 0.14 – 6 mm<sup>2</sup>
- Crimping pliers for connector 0.25 – 6 mm<sup>2</sup>
- Torque wrench for 2.0 - 10 Nm
- Deep-hole marker
- Webasto Thermo Test Diagnosis with current software

## 5 Preparations

### 5.1 Vehicle preparation



Further information can be found in the vehicle manufacturer's technical documentation.

| Vehicle area          | Components to be removed                                                                                                                                                                                                                                                           | Other applicable documents                                                          |
|-----------------------|------------------------------------------------------------------------------------------------------------------------------------------------------------------------------------------------------------------------------------------------------------------------------------|-------------------------------------------------------------------------------------|
| Passenger compartment | <ul style="list-style-type: none"><li>▶ Footwell trim on the driver's side</li><li>▶ Side instrument panel trim on the driver's side</li><li>▶ Lower instrument panel trim on the driver's side</li><li>▶ Centre console trim on the driver's and front passenger's side</li></ul> |  |



## 6 Installation overview

### Renault Talisman, variant 1

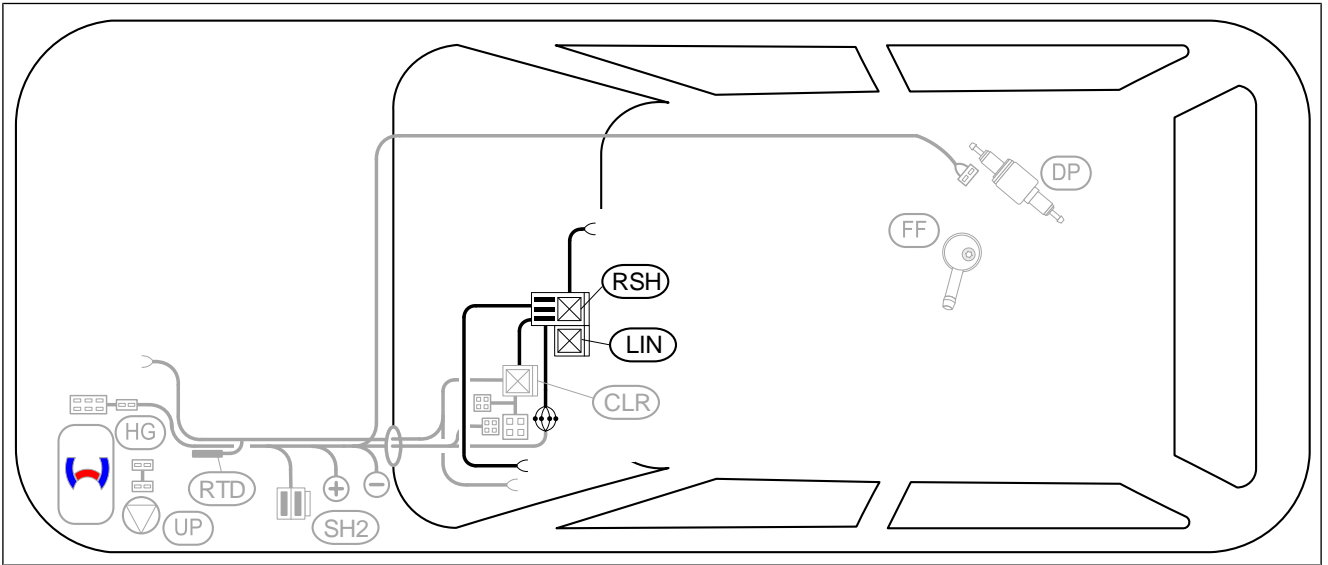


Fig. 1

### Renault Talisman, variant 2

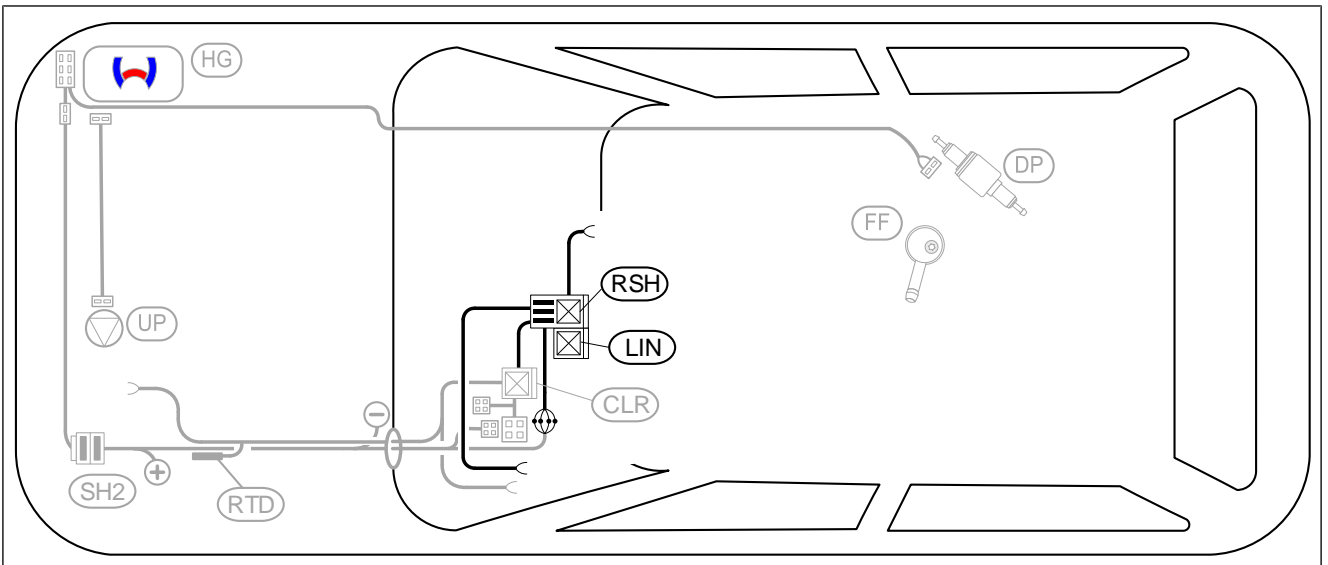


Fig. 2

## Renault Espace

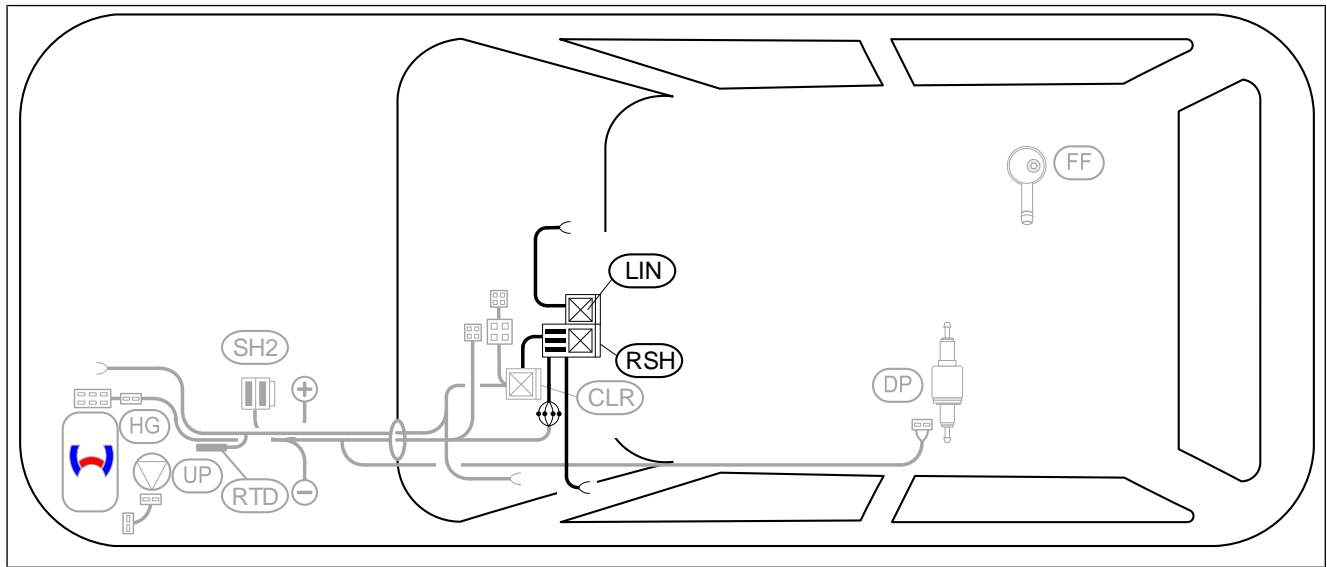


Fig. 3

### Legend to installation overview

| Abbreviation | Component                                      |
|--------------|------------------------------------------------|
| LIN          | LIN GW                                         |
| RSH          | Relay and fuse holder of passenger compartment |



## 7 Electrical system

### 7.1 Electrical system preparation, all vehicles

#### Preparing / assigning wires

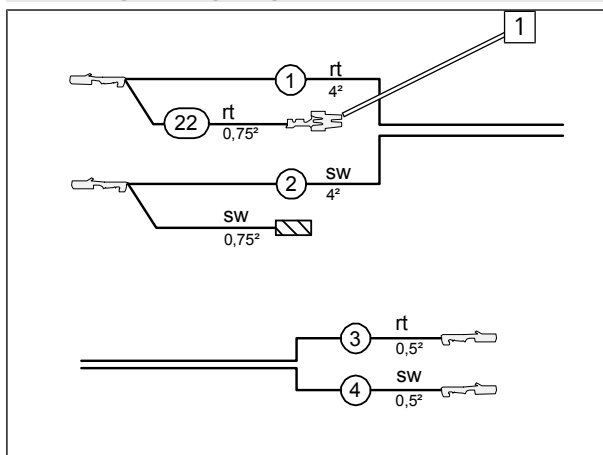


Fig. 4



Only in case of vehicles with installed cold start system.

- 1 Flat spring contact
- ① Red (rt) wire of fan wiring harness
- ② Black (sw) wire of fan wiring harness
- ③ Red (rt) wire of LIN control wiring harness
- ④ Black (sw) wire of LIN control wiring harness

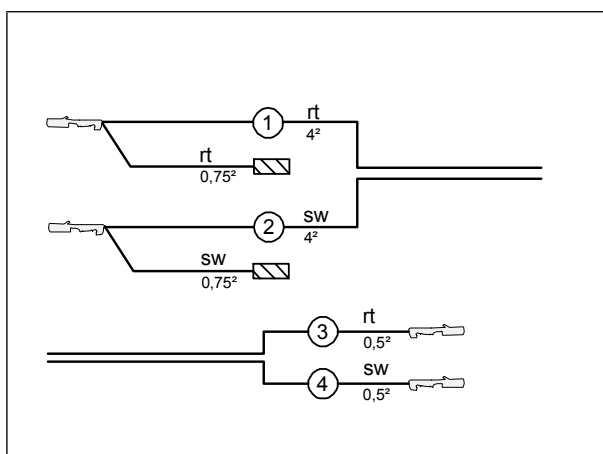


Fig. 5



Only in case of vehicles without installed cold start system.

- ① Red (rt) wire of fan wiring harness
- ② Black (sw) wire of fan wiring harness
- ③ Red (rt) wire of LIN control wiring harness
- ④ Black (sw) wire of LIN control wiring harness

#### View of LIN GW

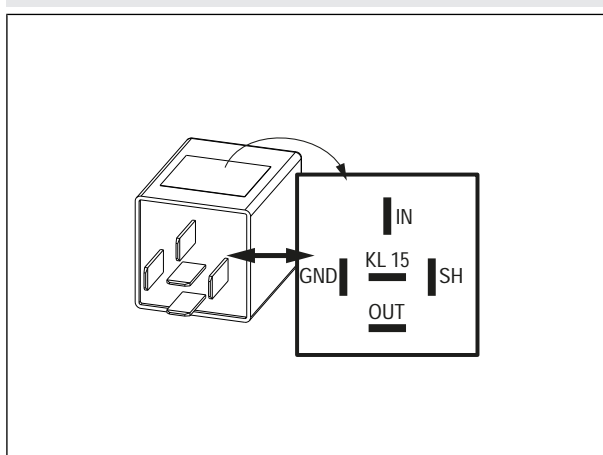


Fig. 6



all vehicles

► Check LIN Gateway settings when starting-up the heater, adjust if necessary.

| Parameter  | Setting      |
|------------|--------------|
| Duty cycle | not relevant |
| Frequency  | not relevant |
| Voltage    | 5.3 V        |
| Function   | LIN          |



## 7.2 Electrical system preparation, Renault Talisman

### Assembling LIN GW and RSH sockets, connecting wires



Wire **22** only in case of vehicles with installed cold start system.

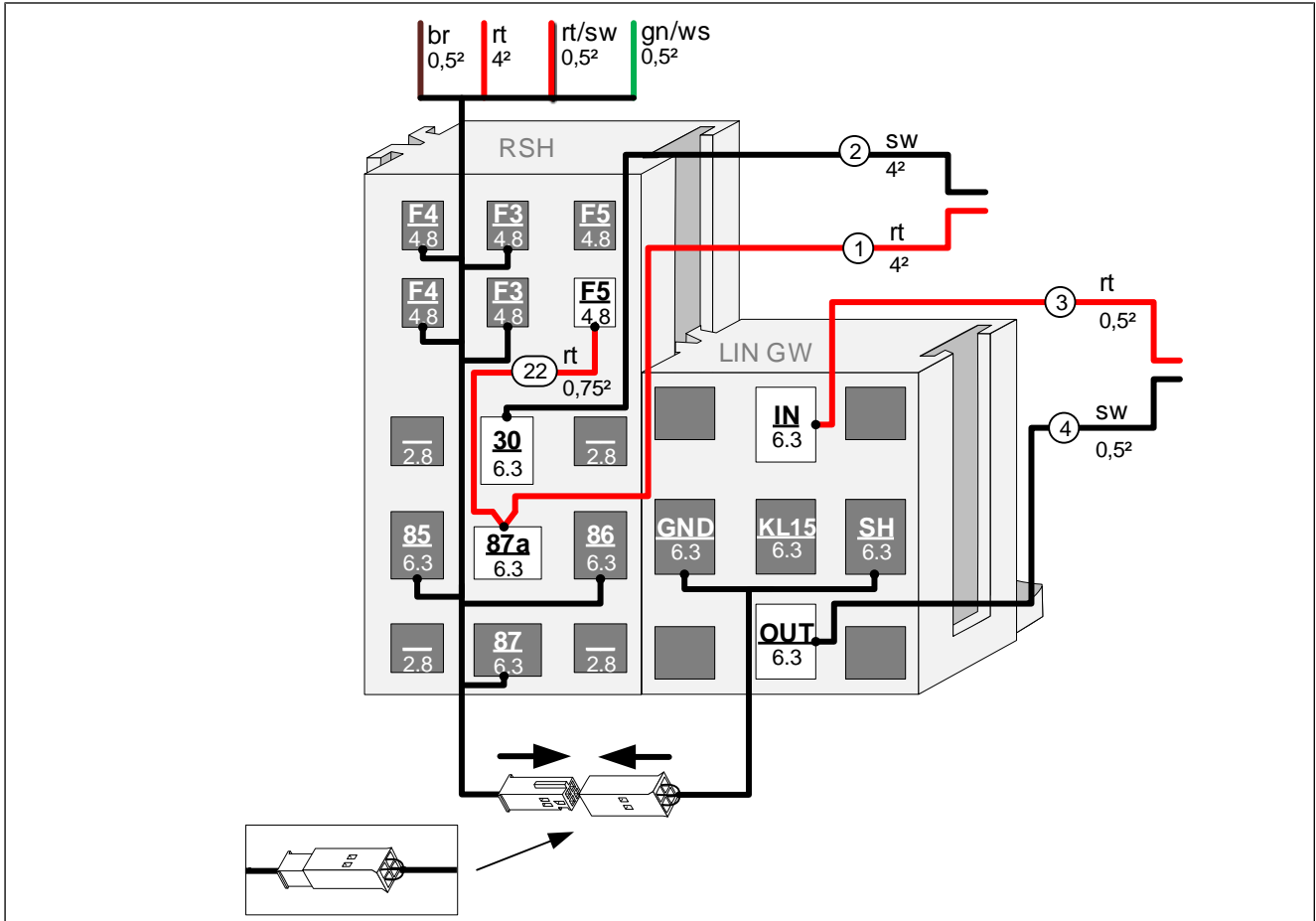
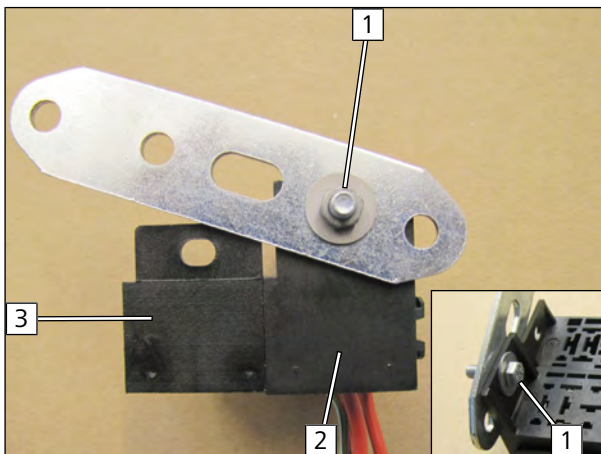


Fig. 7

### Installing perforated bracket



- 1 M5x16 bolt, large diameter washer, RSH, perforated bracket, large diameter washer, nut
- 2 RSH
- 3 LIN GW socket

Fig. 8



### 7.3 Electrical system preparation, Renault Espace

#### Assembling LIN GW and RSH sockets, connecting wires



Wire 22 only in case of vehicles with installed cold start system.

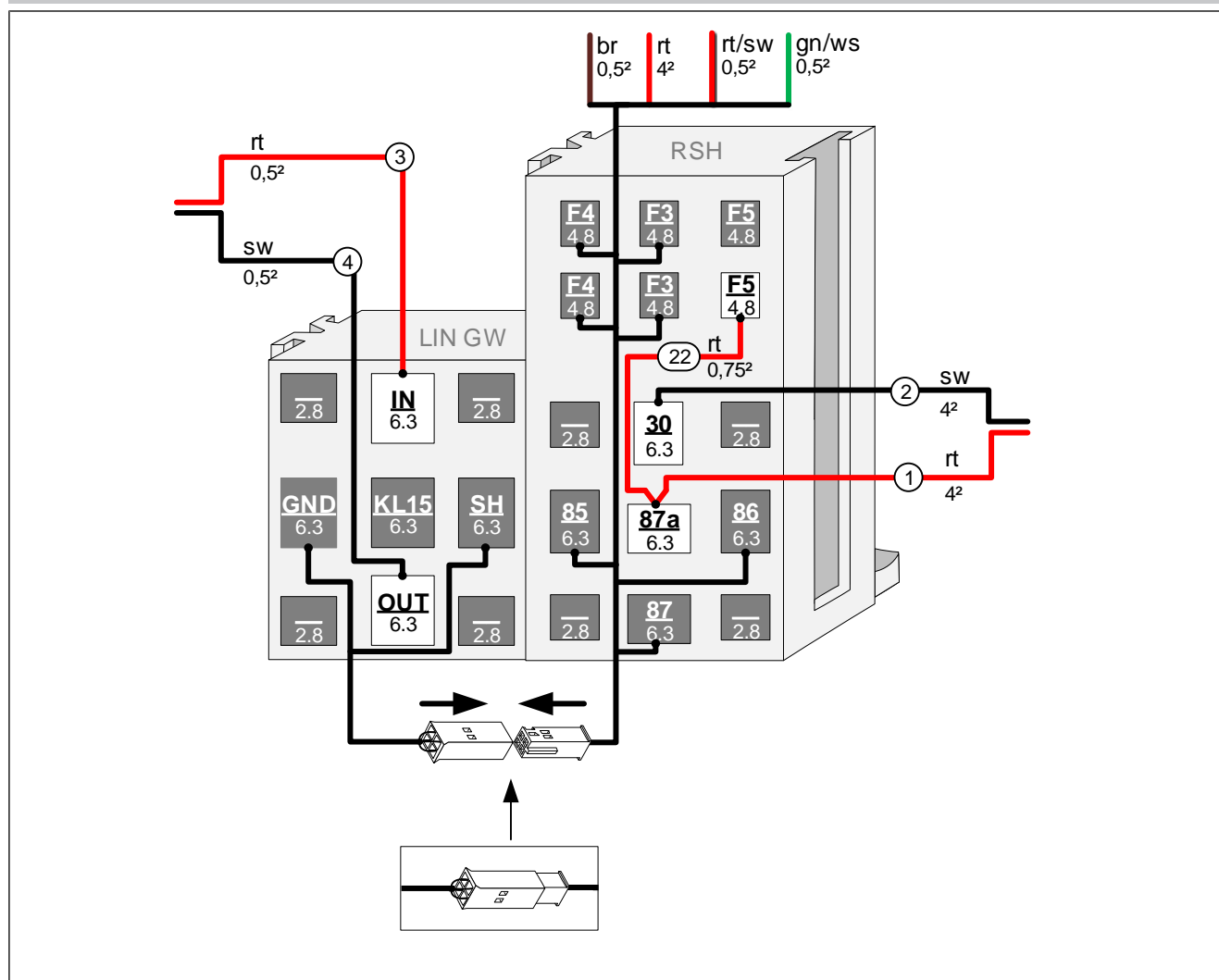


Fig. 9



## Bending perforated bracket

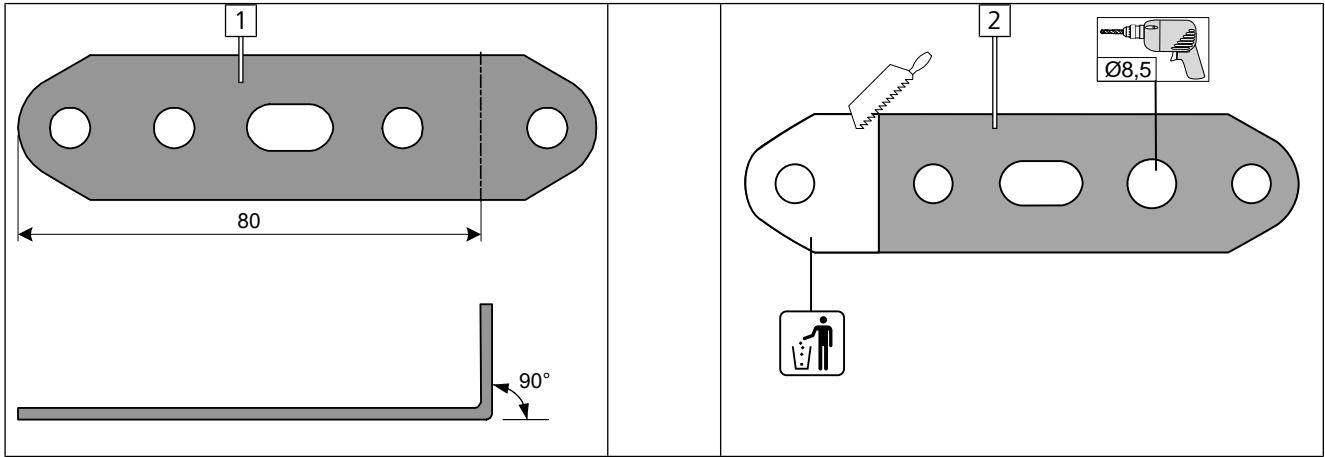


Fig. 10

### up to model year 2021

- 1 Bend perforated bracket as shown

### from model year 2022

- 2 Drill in perforated bracket and shorten it as shown

## Installing perforated bracket

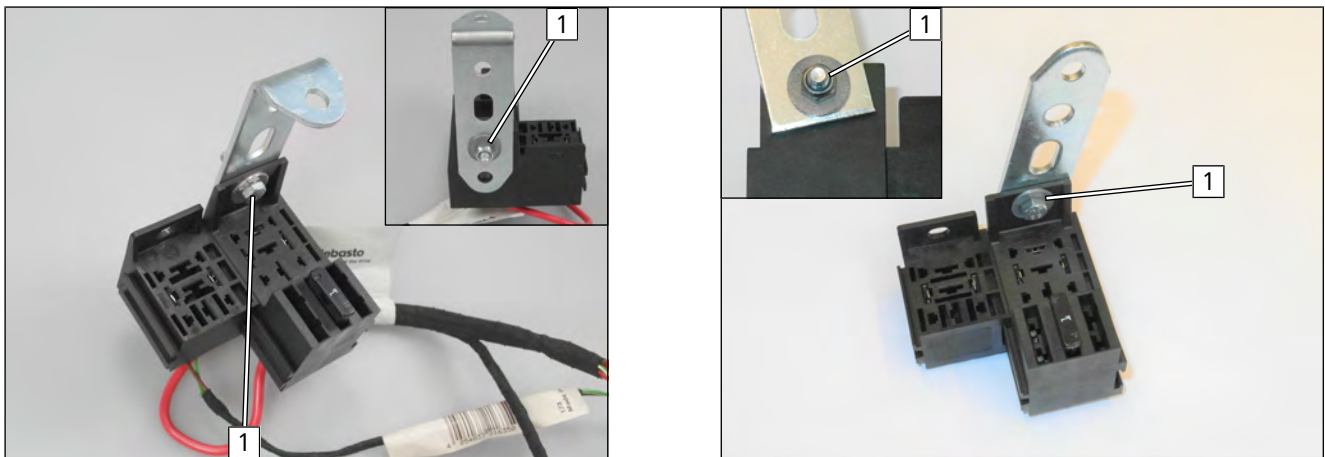


Fig. 11

### up to model year 2021

- 1 M5x16 bolt, large diameter washer, RSH, perforated bracket, large diameter washer, nut

### from model year 2022

- 1 M5x16 bolt, large diameter washer, RSH, perforated bracket, large diameter washer, nut



### 7.4 System wiring diagram, vehicles with cold start system

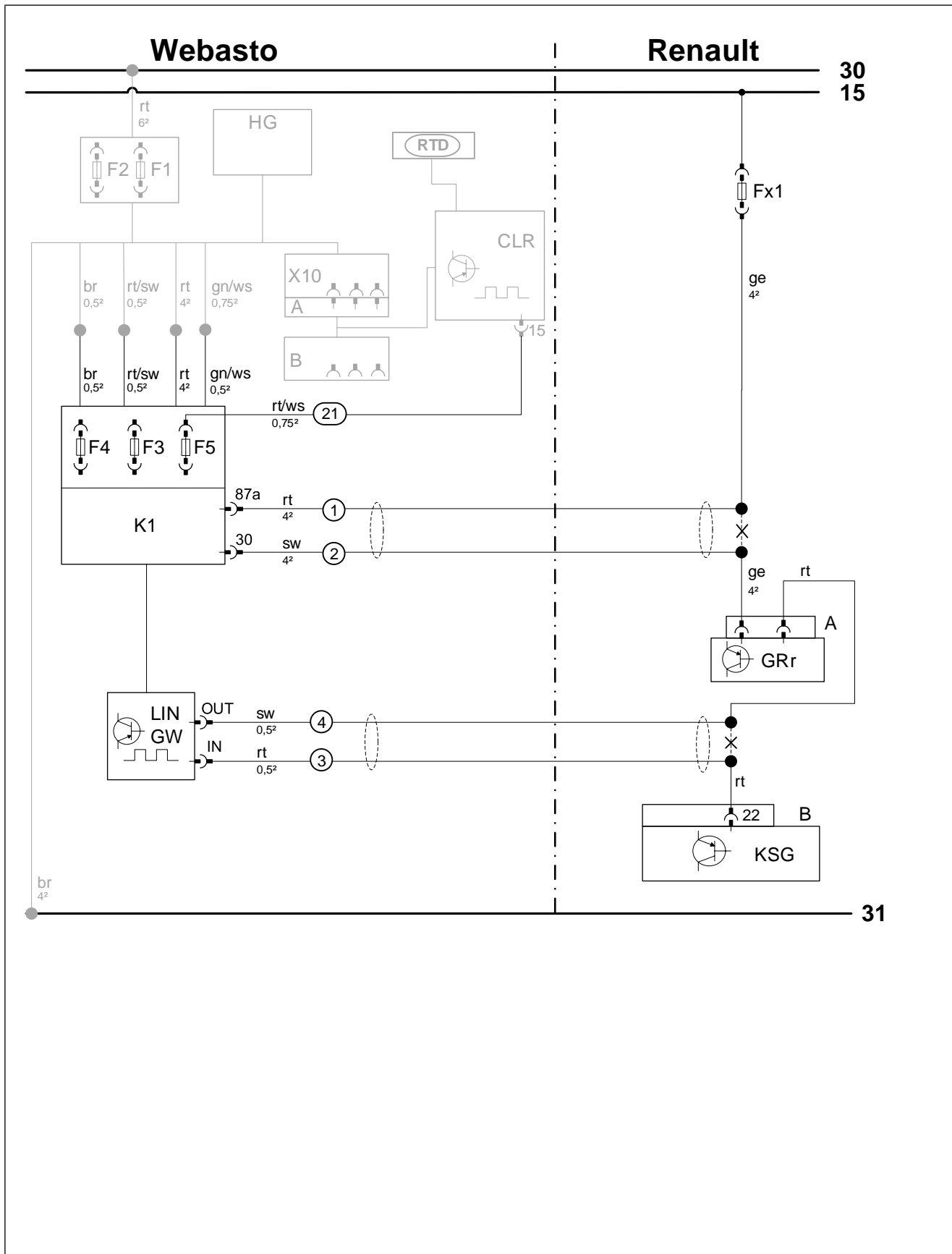


Fig. 12



### 7.5 System wiring diagram, vehicle without cold start system

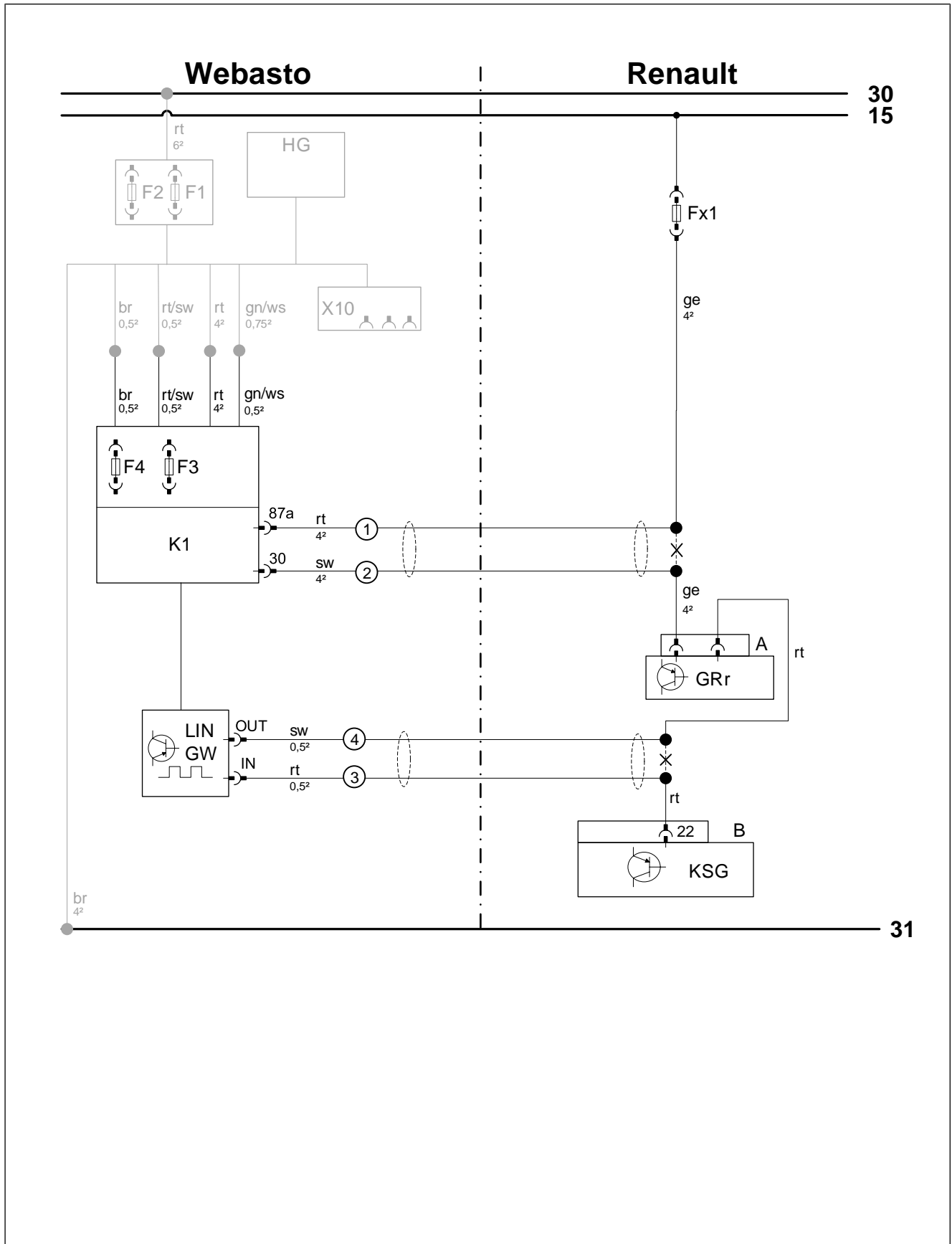


Fig. 13





## 7.6 Legend to the system wiring diagrams



The vehicle connector and component designations are freely chosen by Webasto.  
Wiring colours may vary.

| Vehicle components |                               |              |           |
|--------------------|-------------------------------|--------------|-----------|
| Abbreviation       | Component                     | Abbreviation | Component |
| Fx1                | Fuse 40A                      |              |           |
| GRr                | Fan controller                |              |           |
| A                  | GRr connector                 |              |           |
| KSG                | Air-conditioning control unit |              |           |
| B                  | KSG connector                 |              |           |

| Webasto components |                                                | Symbols |                                                                                     |
|--------------------|------------------------------------------------|---------|-------------------------------------------------------------------------------------|
| Abbreviation       | Component                                      | Graphic | Designation                                                                         |
| A                  | Male plug for CLR module wiring harness        | X       | Cutting point                                                                       |
| B                  | Female plug for CLR module wiring harness      | ●       | existing electrical connection                                                      |
| C                  | Male plug for adapter wiring harness           | ●       | new electrical connection                                                           |
| D                  | Female plug for adapter wiring harness         |         | Wiring harness section or protective sleeving                                       |
| E                  | Male plug for Plug&Play wiring harness         |         | Insulate and tie back wire                                                          |
| F                  | Female plug for Plug&Play wiring harness       |         | The connection is carried out as described in the heater installation documentation |
| CCL GW             | Micro Gateway CAN CAN LIN                      |         |                                                                                     |
| CL GW              | Micro SPS CAN / WBus (Gateway CAN LIN)         |         |                                                                                     |
| CLR                | CAN LIN Rxx (cold start module)                |         |                                                                                     |
| D1                 | Diode                                          |         |                                                                                     |
| D2                 | Diode group                                    |         |                                                                                     |
| F0                 | Additional fuse for power supply               |         |                                                                                     |
| F1                 | Heater main fuse                               |         |                                                                                     |
| F2                 | Passenger compartment fan controller main fuse |         |                                                                                     |
| F3                 | Control element fuse                           |         |                                                                                     |
| F4                 | Fan controller fuse                            |         |                                                                                     |
| F5                 | Additional fuse                                |         |                                                                                     |
| HG                 | Heater TT-Evo                                  |         |                                                                                     |
| K1                 | Relay K1                                       |         |                                                                                     |
| K2                 | Relay K2                                       |         |                                                                                     |
| K3                 | Relay K3                                       |         |                                                                                     |
| LA                 | Power adapter                                  |         |                                                                                     |
| LIN GW             | LIN Gateway                                    |         |                                                                                     |
| MV                 | Solenoid valve                                 |         |                                                                                     |
| PWM GW             | LIN Gateway / PWM (pulse width modulator)      |         |                                                                                     |
| RSH                | Relay and fuse holder of passenger compartment |         |                                                                                     |
| RTD                | Temperature sensor                             |         |                                                                                     |
| X10                | Female plug for control element                |         |                                                                                     |
| X24                | Female plug of RSH                             |         |                                                                                     |
|                    |                                                |         |                                                                                     |

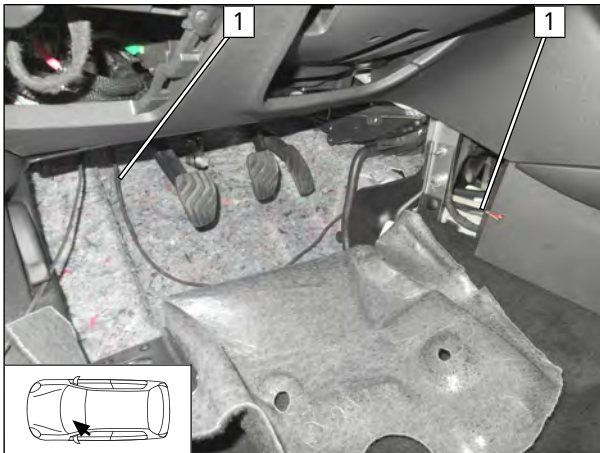
  

| Wire colours |             |
|--------------|-------------|
| Abbr.        | Colour      |
| bg           | beige       |
| bl           | blue        |
| br           | brown       |
| dbl          | dark blue   |
| dgn          | dark green  |
| ge           | yellow      |
| gn           | green       |
| gr           | grey        |
| hbl          | light blue  |
| hgn          | light green |
| la           | salmon      |
| or           | orange      |
| pk           | pink        |
| ro           | Pink        |
| rt           | red         |
| sw           | black       |
| vi           | violet      |
| ws           | white       |



## 7.7 Fan controller, all vehicles

### Routing wiring harness



Shown on a Renault Talisman

- Route heater wiring harness **1** and wire **21** (not shown and only in case of vehicles with installed cold start system) to the centre console as shown.

Fig. 14

### Connecting same colour wires of wiring harnesses

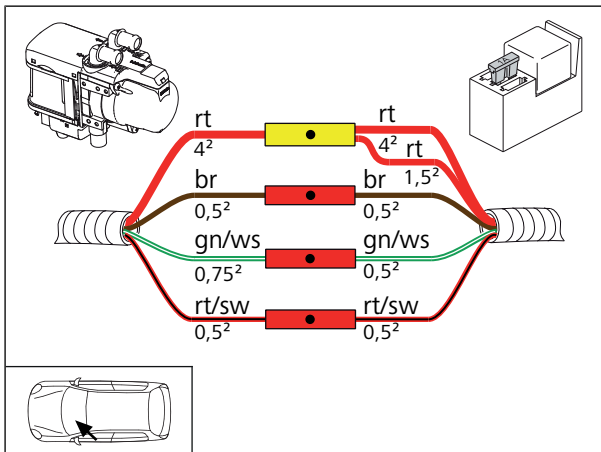


Fig. 15



## 7.8 Fan controller, Renault Talisman

Connecting wire ②① of CLR to slot F5 of RSH

Only in case of vehicles with installed cold start system.

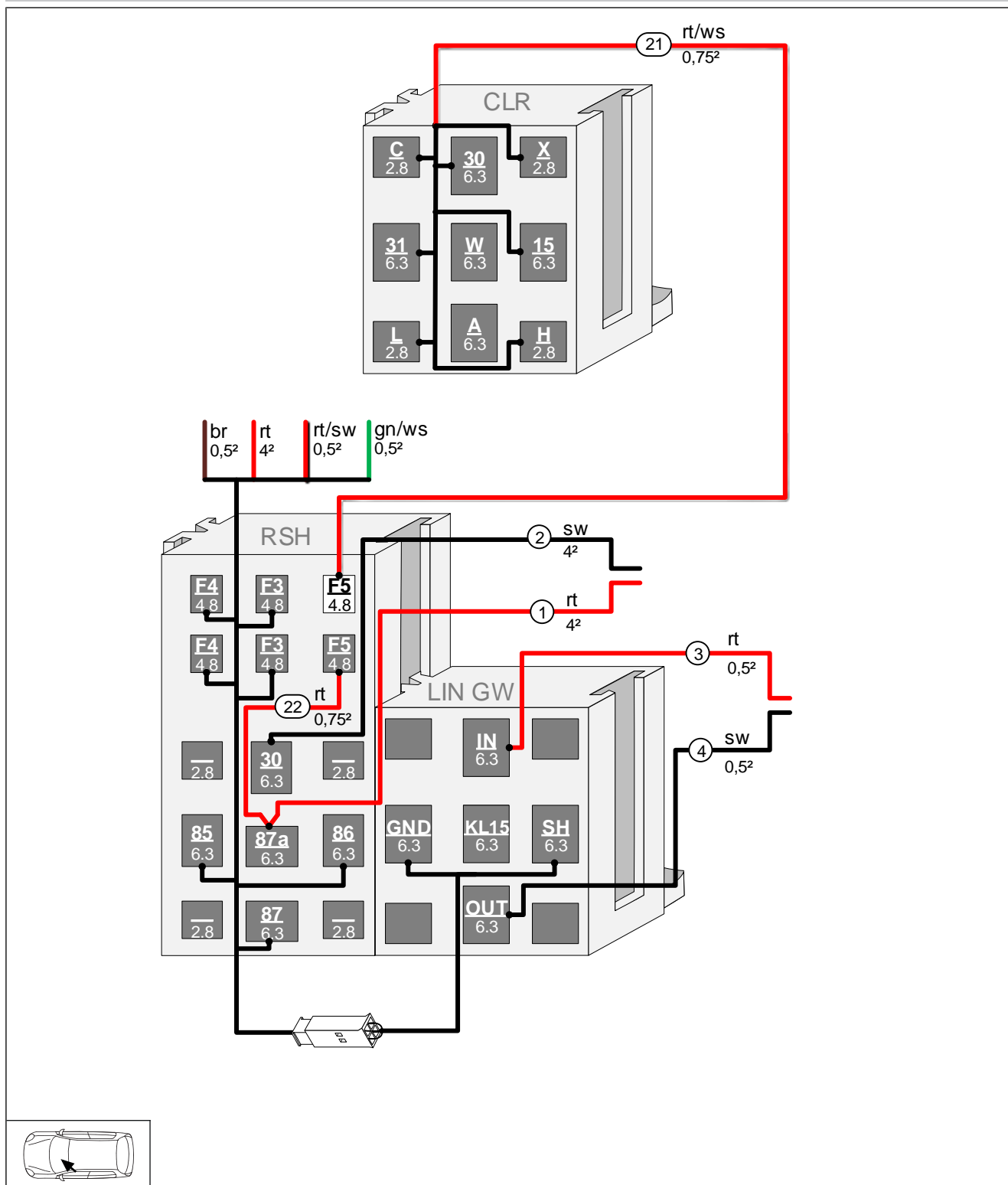


Fig. 16



## Mounting LIN GW and relay K1 as well as fuses F4 and F5

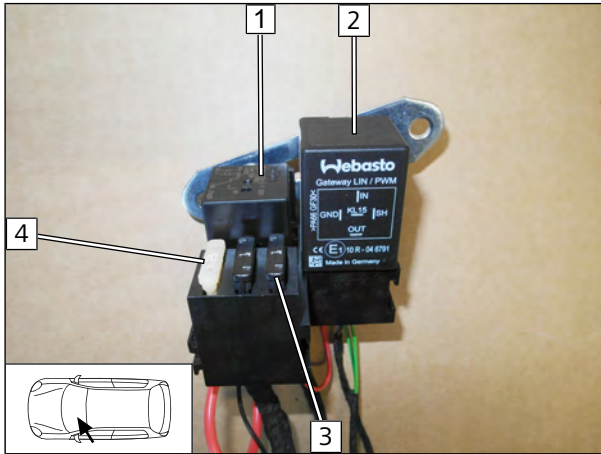


Fig. 17

- 1 Relay K1
- 2 LIN GW
- 3 1A fuse F5 (only required in case of installed cold start system)
- 4 25A fuse F4

## Routing wiring harnesses

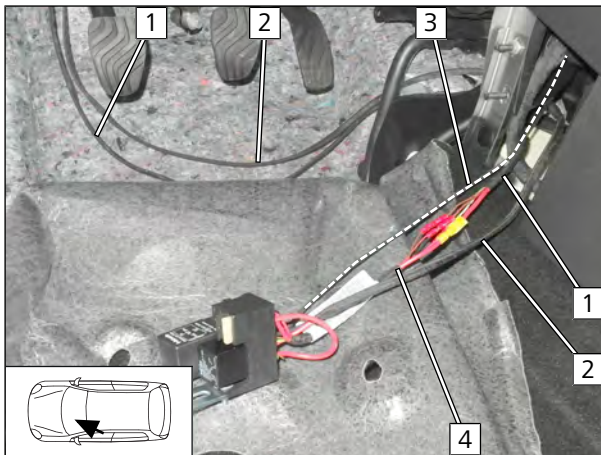


Fig. 18

- ▶ Route fan wiring harness 2 to A-pillar.
  - ▶ Route LIN control wiring harness 3 to the right side of the vehicle.
- 1 Heater wiring harness
  - 4 RSH wiring harness

## Mounting module assembly

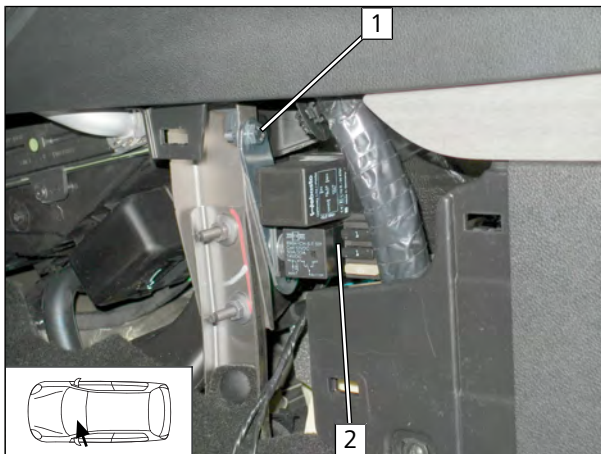


Fig. 19

- 1 M6x20 bolt, large diameter washer, premounted perforated bracket, original vehicle hole, flanged nut
- 2 Premounted module assembly



## 7.9 Fan controller, Renault Espace

Connecting wire 21 of CLR to slot F5 of RSH

Only in case of vehicles with installed cold start system.

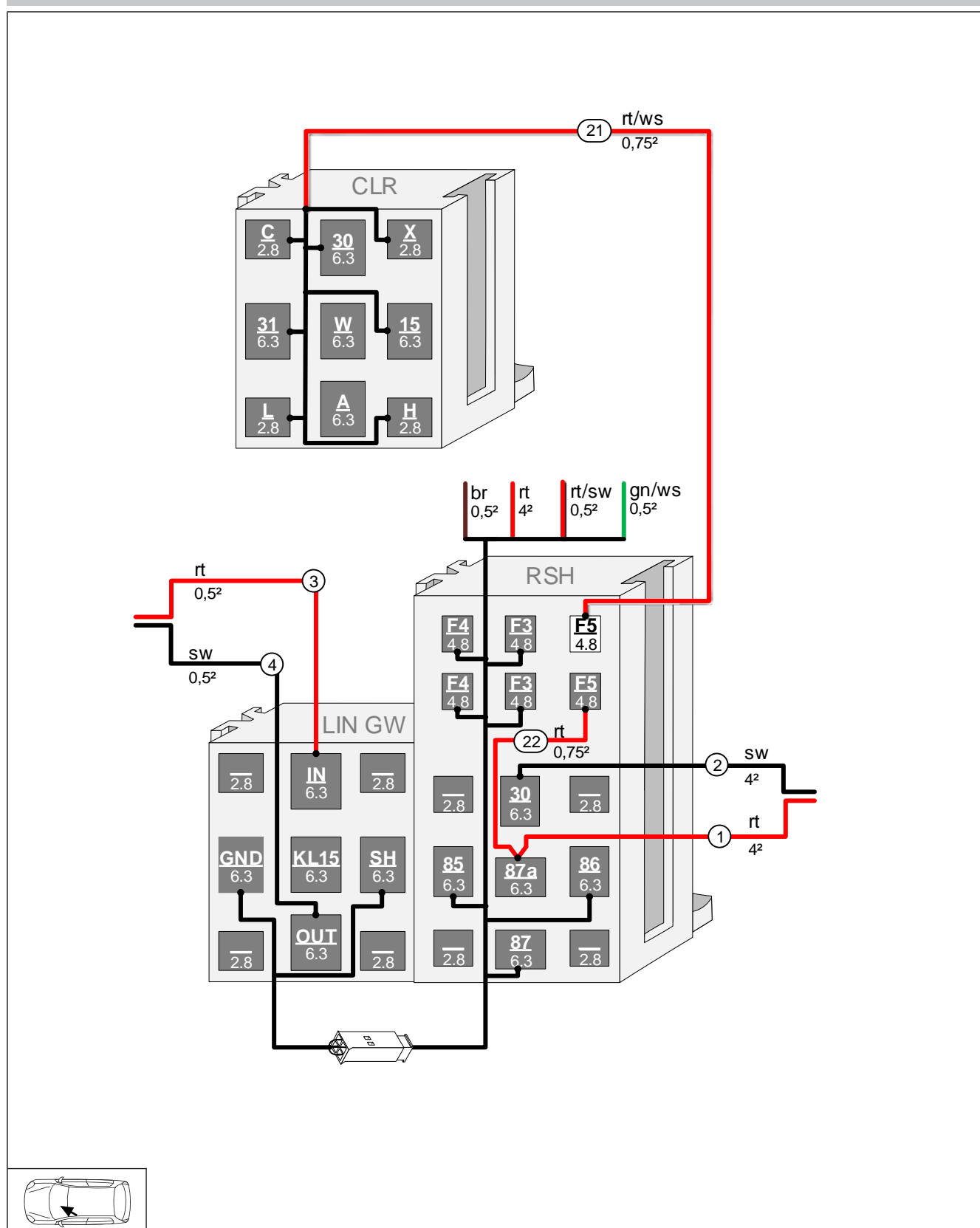


Fig. 20



## 7.9.1 Installation up to model year 2021

### Mounting LIN GW and relay K1 as well as fuses F4 and F5

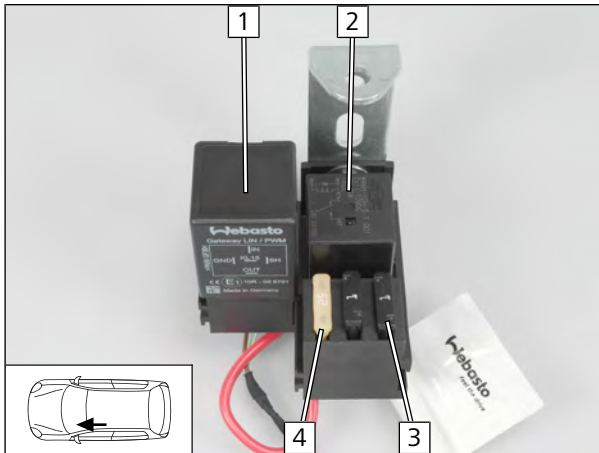


Fig. 21

- 1 LIN GW
- 2 Relay K1
- 3 1A fuse F5 (only required in case of installed cold start system)
- 4 25A fuse F4

### Drilling hole

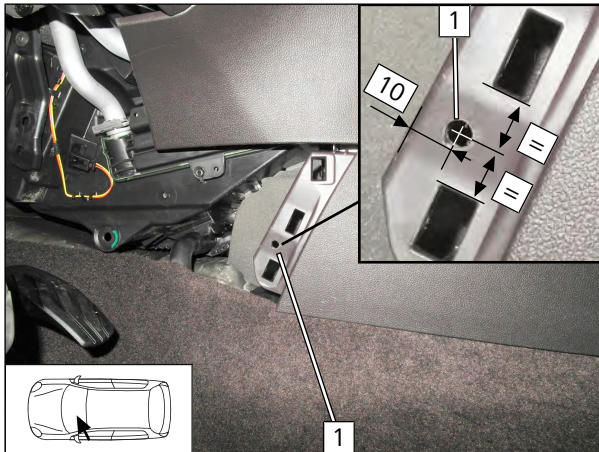


Fig. 22

- 1 Ø6.5 hole

### Mounting module assembly

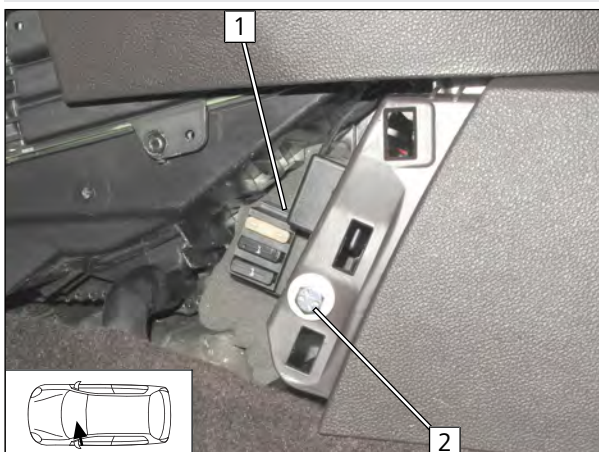


Fig. 23

► Route A/C control wiring harness (not shown) to the front passenger's side.

- 1 Premounted module assembly
- 2 M6x20 bolt, large diameter washer, drilled hole, pre-mounted perforated bracket, flanged nut





## Routing wiring harness to A-pillar

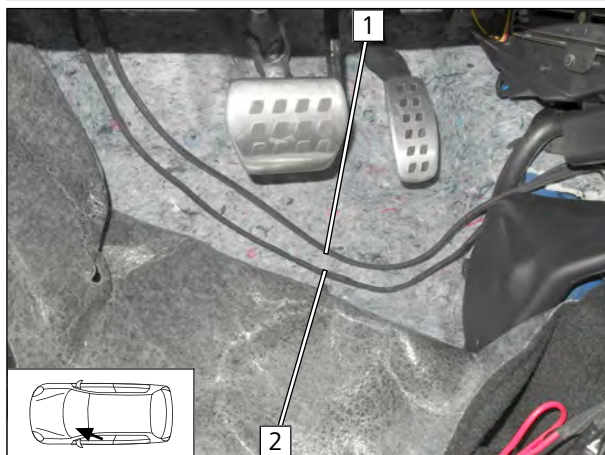


Fig. 24

- 1 Heater wiring harness
- 2 Wiring harness of fan controller

## 7.9.2 Installation from model year 2022

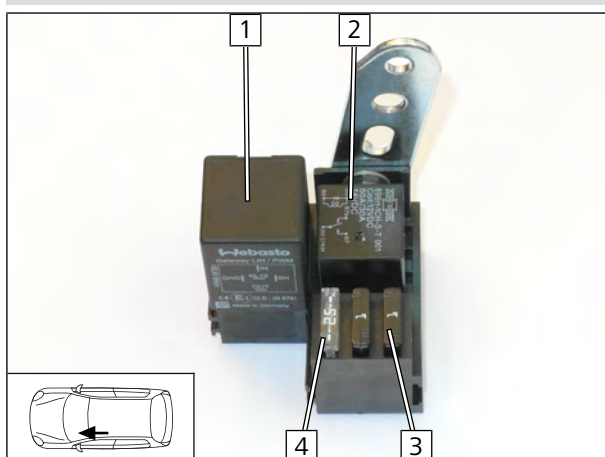


Fig. 25

- 1 LIN GW
- 2 Relay K1
- 3 1A fuse F5 (only required in case of installed cold start system)
- 4 25A fuse F4

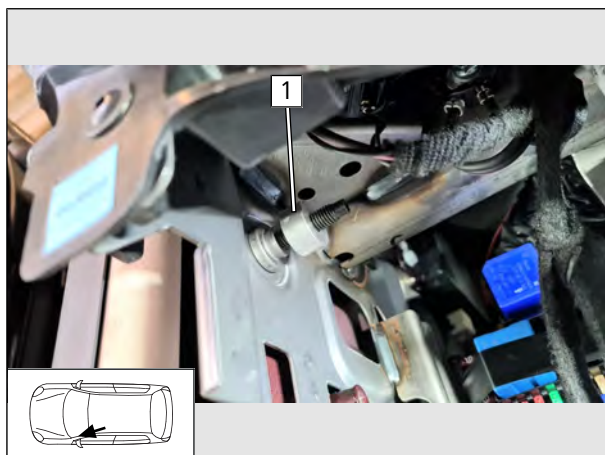


Fig. 26

- 1 Original vehicle stud bolt, distance washer (10)

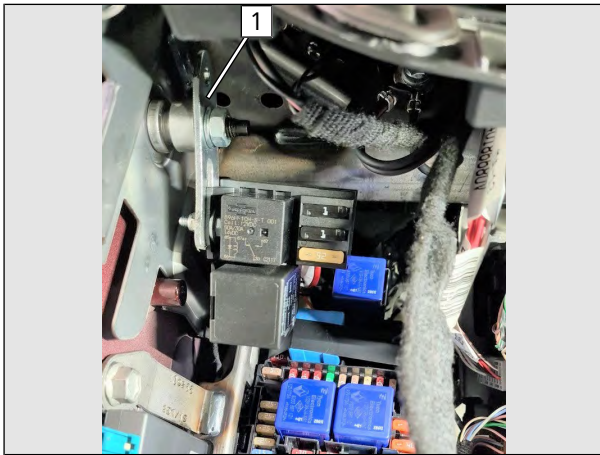


Fig. 27

- 1 Premounted perforated bracket, spring lock washer, M8 nut

## 7.10 Connection of central electrical box, all vehicles

### Detaching central electrical box, locating fan fuse

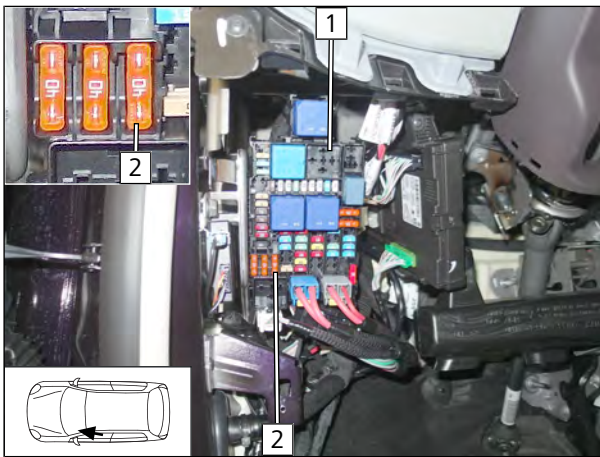


Fig. 28

- 1 Central electrical box
- 2 Original vehicle fuse Fx1

### Connecting wires ① and ②

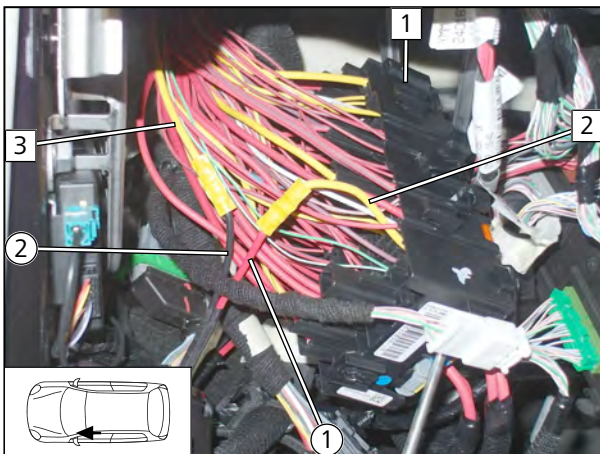


Fig. 29

- 1 Central electrical box detached and turned
- 2 Yellow (ge) wire of Fx1 fuse
- 3 Yellow (ge) wire of GRr
- ① Red (rt) wire of K1/87a fan wiring harness
- ② Black (sw) wire of K1/30 fan wiring harness





## 7.11 Connecting air-conditioning control unit, all vehicles

### Locating KSG connector B

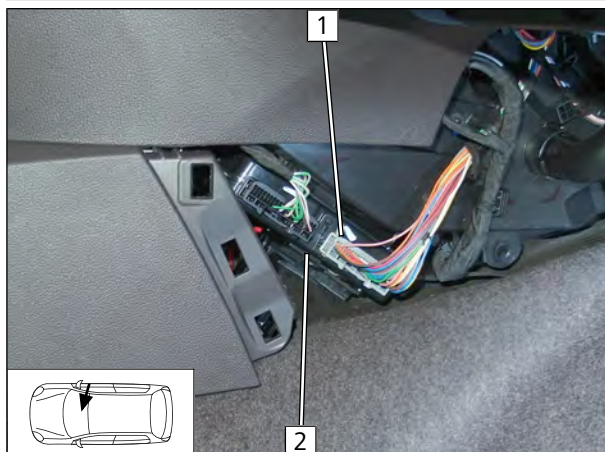


Fig. 30

- 1 40-pin connector B
- 2 KSG

### View of connector B

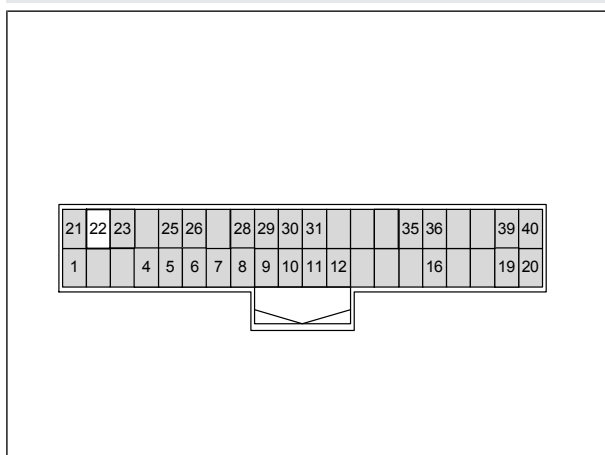


Fig. 31

► KSG connector B on wire side

### Connecting wires ③ and ④

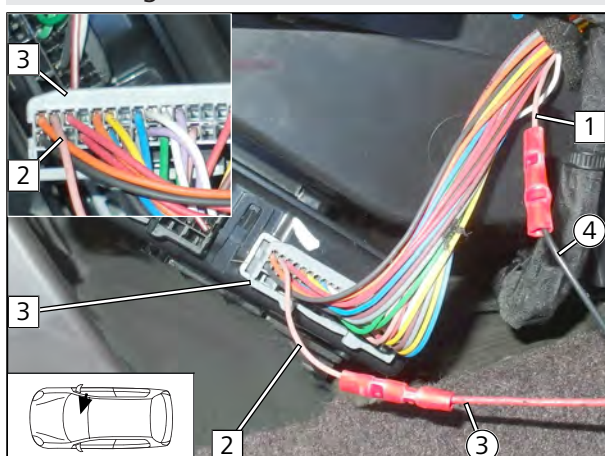


Fig. 32

- 1 Red (rt) wire of GRr connector A
- 2 Red (rt) wire of connector B/pin 22
- 3 KSG connector B
- ③ Red (rt) wire of LIN control wiring harness
- ④ Black (sw) wire of LIN control wiring harness



## 8 Final work



- ▶ Final work is not carried out until the installation of the heater in the vehicle has been completed
- ▶ Check all electrical connections for firm seating
- ▶ Insulate and tie back loose lines





This is a translation from the original German installation instructions.  
To request this Installation Documentation in another language, please locate and contact your local Webasto dealer.  
You can find your nearest dealer at: <https://dealerlocator.webasto.com/en-int>.

© Copyright 2022 - The contents of this document, including but not limited to text, photographs and graphics, are protected by copyright. All rights, including reproduction, publication, editing and translation in any way, shape or form, are reserved by Webasto.

Ident No. 1327337C\_EN • 08/22 • Errors and omissions excepted • © Webasto Thermo & Comfort SE • 2022

Webasto Thermo & Comfort SE  
Postfach 1410  
82199 Gilching  
Germany

Company address:  
Friedrichshafener Str. 9  
82205 Gilching  
Germany

Technical Extranet: <https://dealers.webasto.com>



[WWW.WEBASTO.COM](http://WWW.WEBASTO.COM)

## 9 Operating instructions for Renault Talisman



### Vehicles with passenger compartment monitoring

Further information can be found in the vehicle operating instructions.

- ▶ Deactivate passenger compartment monitoring for the heating operation.



### Information regarding the heating time

We recommend matching the heating time to the driving time (heating time = driving time)

**Example:** for a driving time of approx. 20 min. (in one direction), we recommend not exceeding a switch-on time of 20 min.



### Notes about the active parking heating mode

The vehicle fan is deactivated when the vehicle is opened and is available again once the ignition is switched on.

After the vehicle is closed again, it can take several minutes for it to be active again.

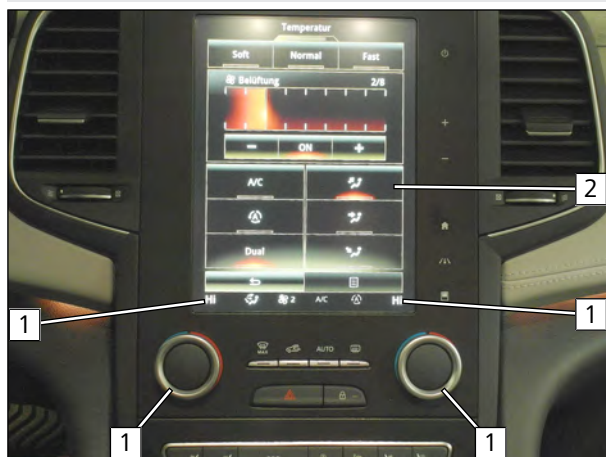


### Note for parking heater function

Your vehicle is equipped with a passenger compartment and engine preheating unit.

### 9.1 A/C control panel settings

#### Automatic A/C control panel, variant 1



Before parking the vehicle, make the following settings:

- 1 Temperature on both sides to 'HI'
- 2 Air outlet turned upwards



Setting the fan speed is not required, it will automatically be set to approx. 1/3.

Fig. 33

## Automatic A/C control panel, variant 2

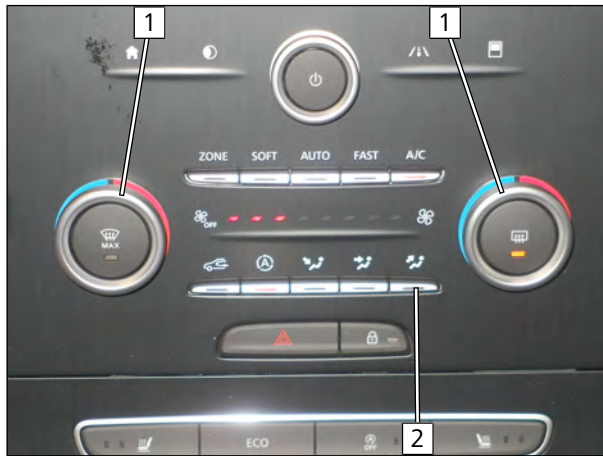




Fig. 34

 Before parking the vehicle, make the following settings:

- 1 Temperature on both sides to 'HI'
- 2 Air outlet turned upwards

 Setting the fan speed is not required, it will automatically be set to approx. 1/3.

## 9.2 Installation location of fuses

### Fuses in engine compartment

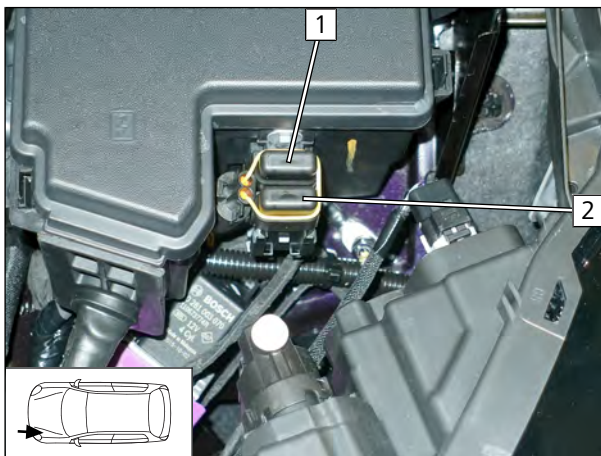


Fig. 35

- 1 F1 - 30A main fuse of passenger compartment
- 2 F2 - 20A heater main fuse

### Fuses in passenger compartment

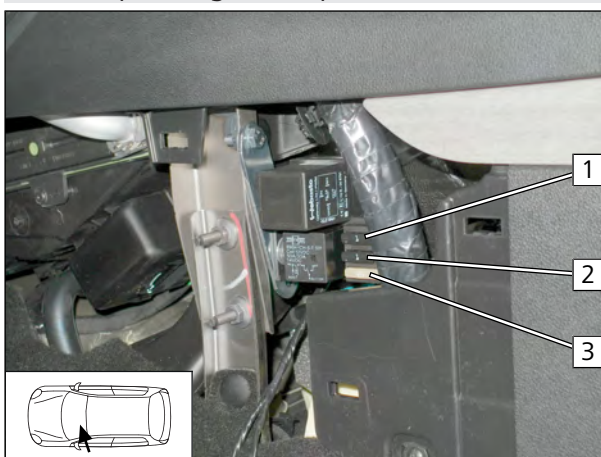


Fig. 36

- 1 F5 - 1A additional fuse (only in case of vehicles with installed cold start system)
- 2 F3 - 1A control element fuse
- 3 F4 - 25A fan controller fuse

## 10 Operating instructions for Renault Espace up to model year 2021



### Vehicles with passenger compartment monitoring

Further information can be found in the vehicle operating instructions.

- ▶ Deactivate passenger compartment monitoring for the heating operation.



### Information regarding the heating time

We recommend matching the heating time to the driving time (heating time = driving time)

**Example:** for a driving time of approx. 20 min. (in one direction), we recommend not exceeding a switch-on time of 20 min.



### Notes about the active parking heating mode

The vehicle fan is deactivated when the vehicle is opened and is available again once the ignition is switched on.

After the vehicle is closed again, it can take several minutes for it to be active again.



### Note for parking heater function

Your vehicle is equipped with a passenger compartment and engine preheating unit.

## 10.1 A/C control panel settings

### Automatic A/C control panel, variant 1

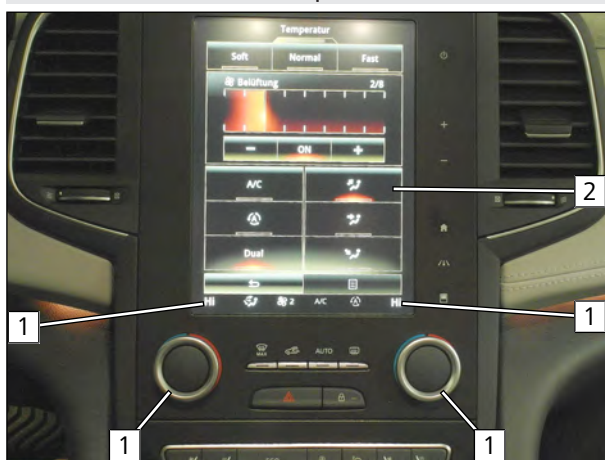


Fig. 37



Before parking the vehicle, make the following settings:

- 1 Temperature on both sides to 'HI'
- 2 Air outlet turned upwards



Setting the fan speed is not required, it will automatically be set to approx. 1/3.



## Automatic A/C control panel, variant 2

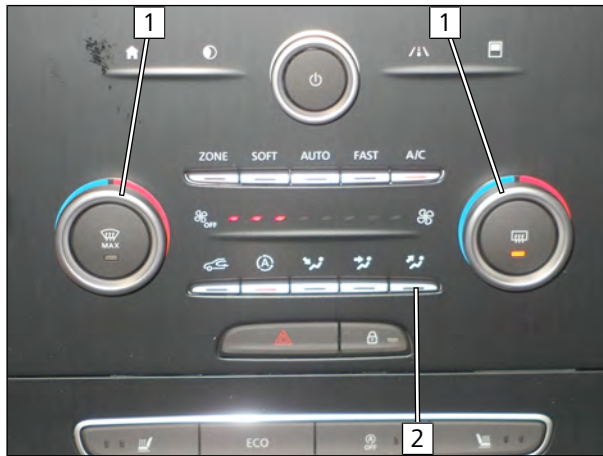




Fig. 38

 Before parking the vehicle, make the following settings:

- 1 Temperature on both sides to 'HI'
- 2 Air outlet turned upwards

 Setting the fan speed is not required, it will automatically be set to approx. 1/3.

## 10.2 Installation location of fuses

### Fuses in engine compartment

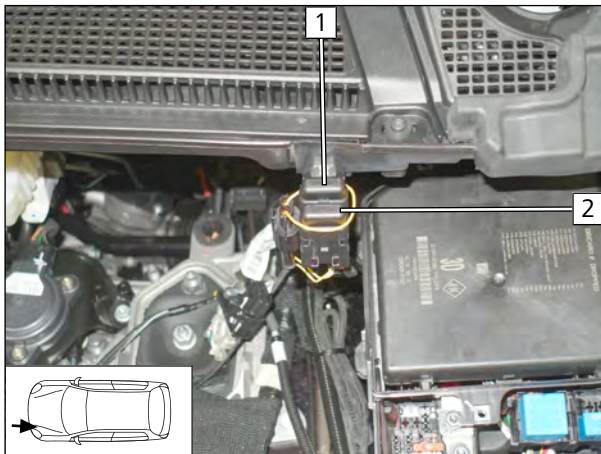


Fig. 39

- 1 F1 - 30A main fuse of passenger compartment
- 2 F2 - 20A heater main fuse

### Fuses in passenger compartment

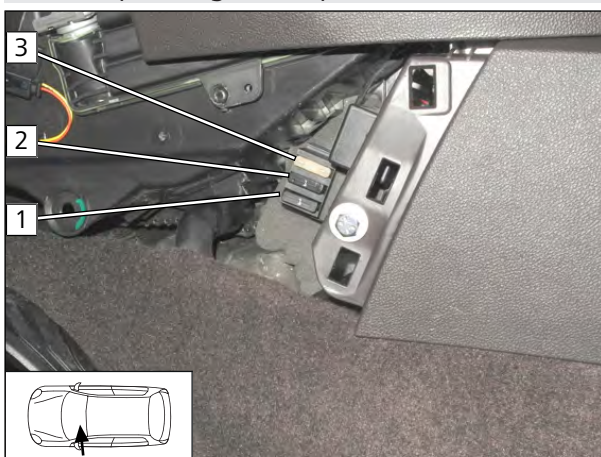


Fig. 40

- 1 F5 - 1A additional fuse (only in case of vehicles with installed cold start system)
- 2 F3 - 1A control element fuse
- 3 F4 - 25A fan controller fuse



## 11 Operating instructions for Renault Espace from model year 2022



### Vehicles with passenger compartment monitoring

Further information can be found in the vehicle operating instructions.

- ▶ Deactivate passenger compartment monitoring for the heating operation.



### Information regarding the heating time

We recommend matching the heating time to the driving time (heating time = driving time)

**Example:** for a driving time of approx. 20 min. (in one direction), we recommend not exceeding a switch-on time of 20 min.



### Notes about the active parking heating mode

The vehicle fan is deactivated when the vehicle is opened and is available again once the ignition is switched on.

After the vehicle is closed again, it can take several minutes for it to be active again.



### Note for parking heater function

Your vehicle is equipped with a passenger compartment and engine preheating unit.

### 11.1 A/C control panel settings

#### Automatic A/C control panel

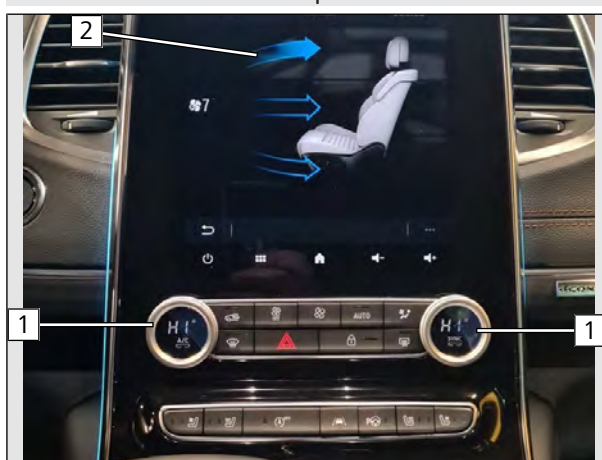


Fig. 41



Before parking the vehicle, make the following settings:

- 1 Temperature on both sides to 'HI'
- 2 Air outlet turned upwards



Setting the fan speed is not required, it will automatically be set to approx. 1/3.

## 11.2 Installation location of fuses

### Fuses in engine compartment

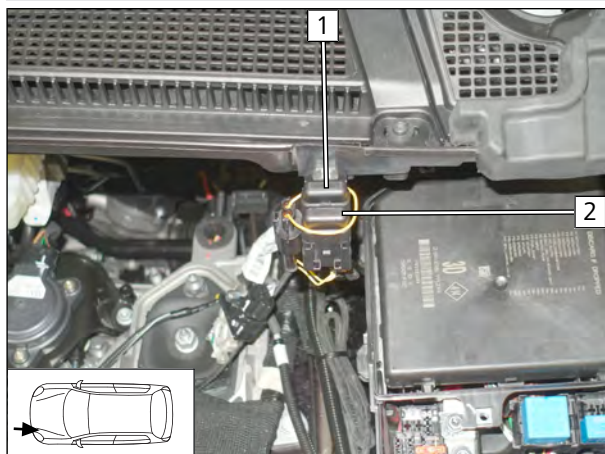


Fig. 42

- 1 F1 - 30A main fuse of passenger compartment
- 2 F2 - 20A heater main fuse

### Fuses in passenger compartment

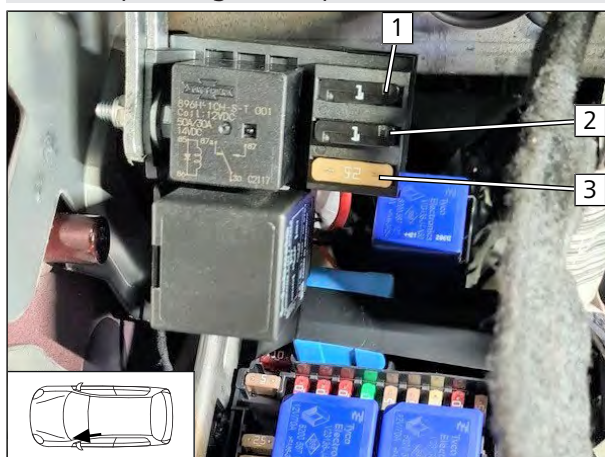


Fig. 43

- 1 F5 - 1A additional fuse (only in case of vehicles with installed cold start system)
- 2 F3 - 1A control element fuse
- 3 F4 - 25A fan controller fuse