



# Easy 3D WLAN CCD kits for ML 1800 and ML TECH+

Wheel alignment with user PC



- Wireless transfer to tablet PC
- Saving space without PC cabinet and fewer cables
- Flexible, mobile and highly accurate

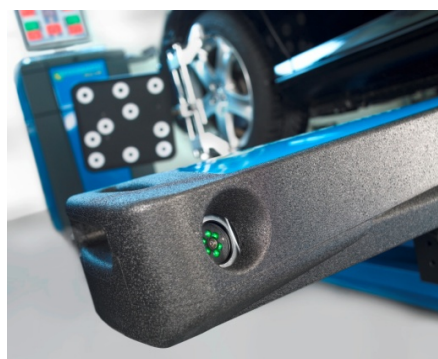
## Easy 3D: Wheel alignment with 3D 12-camera technology



## Beissbarth wheel alignment with OEM precision

Precision 3D technology with 12 cameras  
Accuracy  $\pm 2$  angular minutes

- Absolute accuracy:  $\pm 2$  angular minutes
- Repeat accuracy:  $\pm 2$  angular minutes
- Reference system with 4 CCD cameras
- Rolling and driving run-out compensation: No need for lifting clear
- Mobile, flexible use of sensor heads, e.g. for platforms and pits
- Robust, sturdy design for practical everyday workshop applications
- Short set-up times: Lightweight targets
- New 13-22" Multi-Fit clamps (optionally up to 28")
- Magnetic holders for quick set-up
- No need for complex calibration

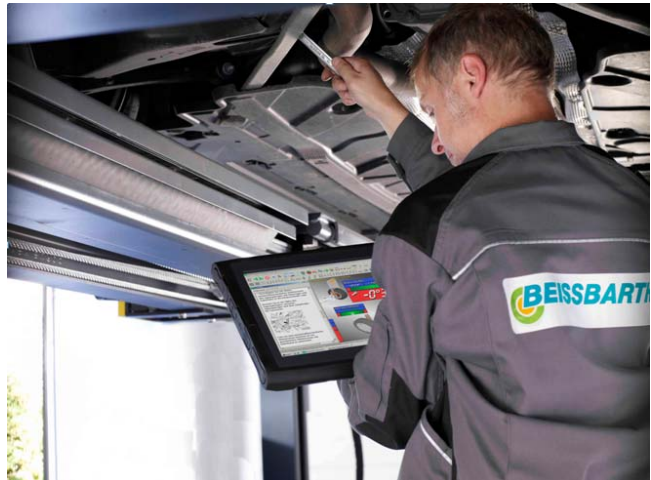


# Easy 3D WLAN

## Wireless data transfer to computer



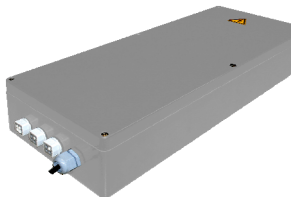
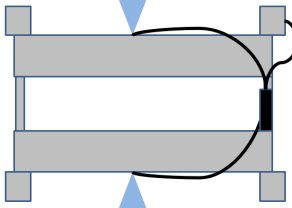
Wireless from computer to WLAN box



Mobile and convenient adjustment work

### WLAN box and Bluetooth communication for Easy 3D

- Wheel alignment from mobile tablet PCs or Notebooks (Windows)
- Full measurement (all values) with user PC hardware ("BYOD")
- One central computer for all measured values and repair data
- No need for PC cabinet (printer etc.), thus saving space
- Fewer cables = quicker to install & fewer obstacles
- Changes in measured value are easier to read when making adjustments under the platform

 <p><b>3D measurement box</b></p> <ul style="list-style-type: none"> <li>- Parallel data transfer to computer via WLAN and Bluetooth</li> <li>- Data cables to measurement heads</li> <li>- Cables to PC cabinet no longer required</li> </ul>	 <p><b>Installation</b></p> <ul style="list-style-type: none"> <li>- On lifting platform cross member (cable set 5/5m)</li> <li>- Alternatively on column (7.5/5m)</li> <li>- At control console for scissor lifts (15/15m)</li> </ul>
---	--

### Few parts, low price: The "Easy 3D WLAN Kit":

Two 3D sensors, 4 targets, 3D WLAN box, USB adapters for WLAN and Bluetooth, DVD with software and target data:



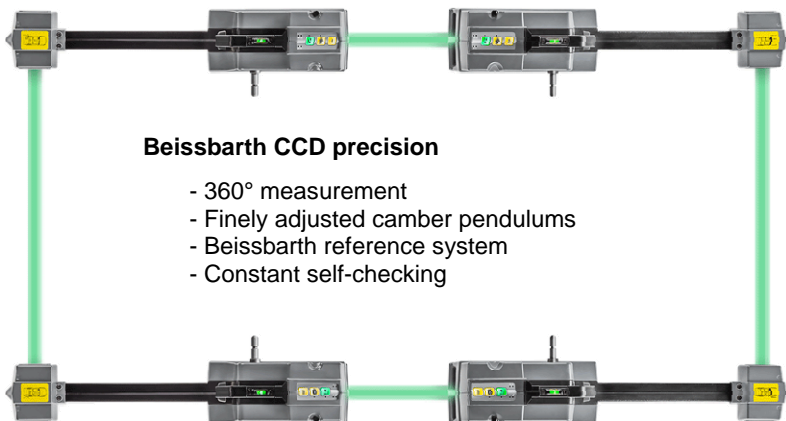
## ML 1800 and ML TECH+

Beissbarth CCD wheel alignment: For better measurement results.



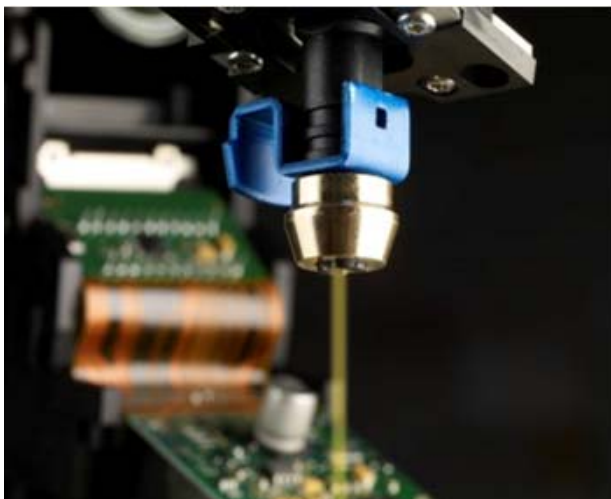
- Digital 20° CCD cameras with advanced sensor technology
- Measurement accuracy of  $\pm 2$  angular minutes
- 20° CCD camera technology for simpler caster measurement

Electronic turntables for maximum steering angle



### Beissbarth CCD precision

- 360° measurement
- Finely adjusted camber pendulums
- Beissbarth reference system
- Constant self-checking



# ML 1800 Kit and ML TECH+ Kit

## CCD measurement with tablet PC control



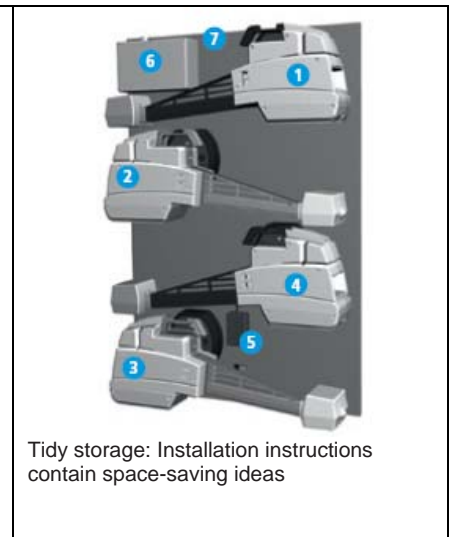
Wireless and Bluetooth data transfer



Mobile and flexible working

**Wireless data transfer** from sensor to CCD measurement box. From measurement box to tablet PC via Bluetooth

**Compatible** with PCs, Notebooks and tablet PCs (Windows XP or Windows 7). Details below.



### The low-cost introduction to wheel alignment with the CCD kit:

4 CCD sensors with charging adapter (for hanging up and charging), USB adapter for Bluetooth, DVD with software and specified data and the CCD measurement box:



## Wheel alignment with CCD and 3D from Beissbarth



Measured values	Precision	Measuring range	Total range
1. Total toe (front axle + rear axle)	± 4'	± 6°	± 18°
2. Individual toe (front axle + rear axle)	± 2'	± 3°	± 9°
3. Camber (front axle + rear axle)	± 2'	± 5°	± 10°
4. Setback (front axle + rear axle)	± 2'	± 2°	± 9°
5. Geometrical driving axis	± 2'	± 2°	± 9°
6. Caster	± 4'	± 18°	± 22°
7. Steering axis inclination	± 4'	± 18°	± 22°
8. Toe-out on turns	± 4'	± 20°	± 20°
9. Caster correction range (front axle)	± 4'	± 7°	± 10°
10. Max. steering angle (front axle + rear axle) <sup>2) 3)</sup>	± 4'	± 50°	± 60°
11. Setback (rear axle) <sup>1)</sup>	± 2'	± 2°	± 2°
12. Wheelbase difference	± 2'	± 2°	± 2°
13. Side offset left/right	± 2'	± 2°	± 9°
14. Track width difference	± 3'	± 2°	± 18°
15. Axle offset	± 3'	± 2°	± 9°

<sup>1)</sup> Not for CCD 6cam wheel alignment units

<sup>2)</sup> For CCD wheel alignment units: only in combination with electronic turntables;

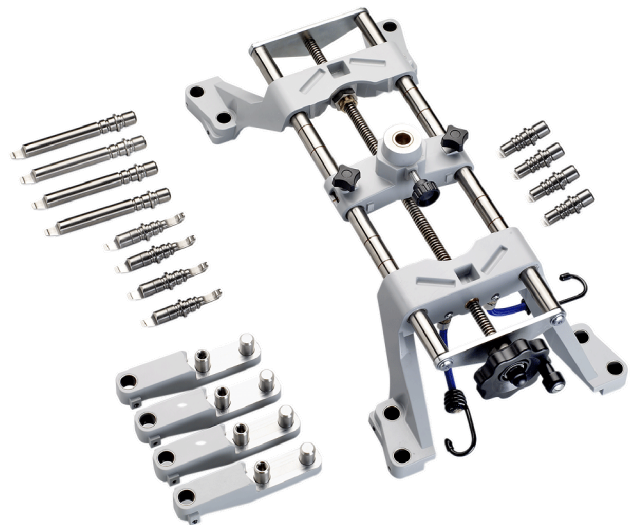
<sup>3)</sup> For 3D 8cam wheel alignment units: not possible for all vehicles

### Multi-Fit clamp

- For quick and easy attachment of sensors or targets to wheels
- Four precision jaws for all standard rims
- Torque limiter guards against rim damage
- Clamping width 13" to 22"

#### Optional extras:

- Multi-Fit extensions 28"
- Multi-Fit jaws for trucks
- Multi-Fit special jaws (RFT, Softline)



### Magnetic holder

- Direct attachment to wheel bolts in a matter of seconds
- Ideal for all magnetic bolts with sufficiently flat surface
- Central adjuster for adaptation to different hole circles
- Included as standard with Easy 3D WLAN "Excellence" version

**Optional:** Special adapters for Softline rims



## Versions / scope of delivery

### 3D 12-Camera

### CCD

	Easy 3D WLAN					ML 1800	ML Tech+
	Kit	Standard	Excellence	OEM Excellence	Upgrade	Kit	Kit
	Blue RAL 5015 1.690.700.052	Blue RAL 5015 1.690.700.053	Blue RAL 5015 1.690.700.054	Grey RAL 7014 1.690.700.055	1.690.700.063	1.690.310.056	1.690.310.049
<b>Cabinet</b> with PC, scanner printer Monitor		in 19"	in 27"	in 27"			
<b>Sensors</b>	2x 3D	2x 3D	2x 3D	2x 3D	O	4 CCD	4 CCD
CCD sensors	4	4	4	4	O	8	8
CCD run-out compensation encoder							in
3D stereo cameras	8	8	8	8	O		
<b>Measurement box</b> CCD wireless/Bluetooth						in	in
Measurement box 3D wireless/Bluetooth	in	in	in	in	in		
Bluetooth USB stick	in	in	in	in	in	in	in
WLAN USB stick	in	in	in	in	in		
<b>Cable set</b> CCD (spare)						in	in
Cable set 3D (15 m)	O	in	in	in	O		
Charging stations for CCD sensors						in	in
<b>3D targets</b>	4	4	4	4	O		
Magnetic holders	O	O	in	in	O		
Multi-Fit clamps (incl. jaws)	O	in	in	in	O	O	O
Multi-Fit special jaws	O	in	in	in	O	O	O
<b>Turntable</b> Alu (mechanical)	O	in	in	in	O	O	O
Plastic filler (for DA)	O	in	in	in	O	O	O
Lift adapter (under-floor/elevated)	O	in	in	in	O		
<b>Software</b>	in	in	in	in	in	in	in
Target data	in	in	in	in	O	in	in
Brake clamp	O	in	in	in	O	O	O
Steering wheel lock	O	in	in	in	O	O	O
Trolley cover	O	O	in	in	O	O	O

O = **Option**  
in = **inclusive**

## PC specifications

for Easy 3D WLAN and ML 1800 Kit and ML TECH+ Kit

<b>Operating system</b>	Windows XP Professional
<b>Microsoft Windows</b>	Embedded Windows POS Ready 2009 Windows 7 Professional (64-bit) Windows 7 Ultimate (64-bit) Embedded Windows POS Ready 7 (64-bit)
<b>CPU</b>	Intel (recommended) or AMD Celeron Dual Core (min 2 x 2.4 GHz)
<b>RAM Main memory</b>	Min. 2 GB
<b>Hard disk capacity</b>	64 GB total (required: 15 GB)
<b>Optical drive</b>	DVD (for installation only)
<b>COM port</b>	1 for remote control receiver
<b>USB 2.0 ports</b>	<b>For 3D:</b> 3 (software key, Bluetooth stick, WLAN stick) <b>For CCD:</b> 2 (software key, Bluetooth stick)

## Technical data: Easy 3D WLAN

- Two stereo camera measurement systems with triangulation for each sensor
- Integrated reference system with CCD cameras
- WLAN box and PC wireless data transfer:
  - 3D measurement system: WLAN (5 GHz)
  - Reference system: Bluetooth
- Sensor and WLAN box data transfer:
  - 3D measurement system: PoE-LAN cable
  - Reference system: Data cable

### Sensors

Weight 9.4 kg

Colour: Blue (RAL 5015)

Dimensions (L x W x H) 650 x 150 x 370 mm

### Measurement box

Power supply 100 - 240 V AC (10A)

Mains frequency 50/60 Hz

Power 0.5 kW

Dimensions (L x W x H) 647 x 250 x 131 mm

### Working location

For use on wheel alignment platforms and in pits

Approx. 600 mm clearance per side in addition to runway exterior dimension

### PC trolley incl. 19" TFT monitor (optionally 27")

Weight 80 kg

Colour RAL 5015 (blue)

Dimensions (L x W x H) approx. 980 x 800 x 1,600 mm

### Vehicle size range

Cars and light trucks

Wheelbases between 1,800 mm and 3,400 mm with standard targets

Up to 4,300 mm with larger targets (optional) on rear axle



## Technical data of CCD kits: ML 1800 Kit / ML TECH+ Kit

- 8 CCD measurement system
- Wireless 433 MHz
- Measurement box with Bluetooth interface

### Sensors

Weight 5.8 kg

Colour: Grey / black

Dimensions (L x W x H) 760 x 300 x 200 mm

### Measurement box

Power supply 100 - 240 V AC (10A)

Mains frequency 50/60 Hz

Power 0.05 kW

Dimensions (L x W x H) 250 x 160 x 90 mm

### Vehicle size range

Cars and light trucks

Wheelbase up to 6,500 mm

## Technical data for: Easy 3D WLAN and CCD kits

### Sliding bases

Loadbearing capacity for cars 1,000 kg

Angle of rotation  $\pm 10^\circ$

Slide range +65 <-> -50 mm

Weight 15 kg

Dimensions (L x W x H) 450 x 450 x 50 mm

### Turntables

Loadbearing capacity for cars 1,000 kg

Angle of rotation up to  $360^\circ$

Slide range  $\pm 50$  mm

Weight 14 kg

Dimensions (L x W x H) 450 x 450 x 50 mm

---

*Free space / empty pages? To enable brochure-style printing with front and back page (four pages / one A3 sheet)*



**Service from Beissbarth Munich:**

- Immediate telephone support
- Rapid replacement parts deliveries
- Individual maintenance contracts

**Factory customer service:**

Beissbarth and certified partner companies provide on-site assistance with installation, instruction, equipment assembly and maintenance – with partners in more than 90 countries around the world.

**Training Centre:**

Instruction and training at STC of Robert Bosch GmbH  
73207 Plochingen

**Software Centre:**

Technical documentation, vehicle target data and marketing material for immediate download:

[www.beissbarth.com](http://www.beissbarth.com)



Please note: We make every effort to ensure our product information is accurate and up-to-date. We nevertheless reserve the general right to make changes to technical data, colours and equipment at any time. Certain illustrations may contain optional special accessories. For a binding quotation please contact our authorised dealers directly at [www.beissbarth.com](http://www.beissbarth.com).

Beissbarth GmbH  
A Bosch Group Company  
Hanauer Strasse 101  
80993 Muenchen, Germany  
Tel. +49-89-149 01-0  
Fax +49-89-149 01-240  
[www.beissbarth.com](http://www.beissbarth.com)  
[sales@beissbarth.com](mailto:sales@beissbarth.com)

Version: 20.03.2014

